

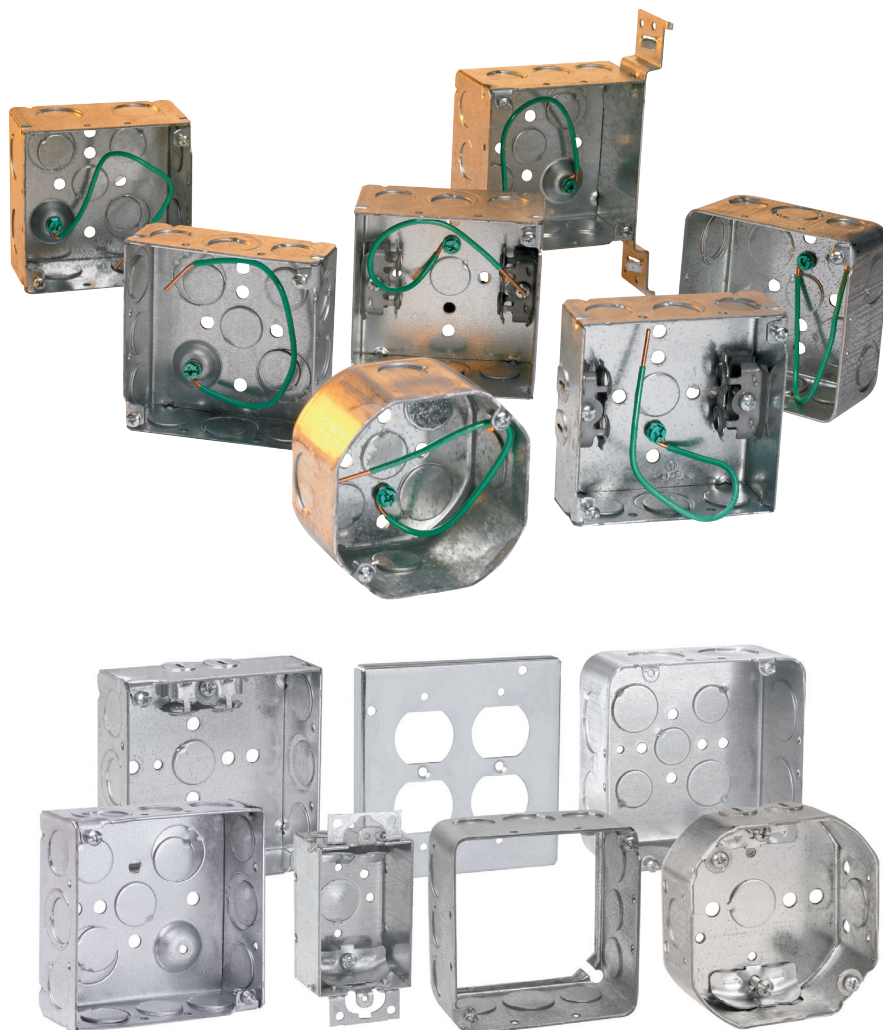
Switch & outlet boxes – technical data

Outlet boxes and covers

Eaton's Crouse-Hinds Division has assembled one of the most complete outlet box product lines in the business. We've been leading in quality and selection for decades and throughout the Crouse-Hinds steel outlet box offering, you will find innovative products and solutions that save labor, cut material costs and increase productivity.

We have a complete offering of:

- 4" and 4¹¹/₁₆" square drawn and welded boxes with raised cover plate screws for ease of attaching covers
- 4" square and 4¹¹/₁₆" , switch, masonry, utility, outlet, ceiling, fan and gangable boxes
- Drawn boxes available with concentric knockouts, combining 1/2" and 3/4" knockout
- Complete line of covers, partitions, extension rings and accessories
- Uni-Mount™ covers
- PRE-formance™ products
- Pre-assembled boxes which includes Uni-Mount cover attached to 4" square box
- Pre-fabricated boxes which includes Uni-Mount cover attached to 4" square box with ground screw and lead installed
- Fire alarm boxes and covers
- Boxes available with various means of grounding including
 - Tapped ground holes
 - Pre-installed ground screws
 - Pre-installed ground pigtails



Outlet boxes

Switch & outlet boxes – technical data

General information

Compliances:

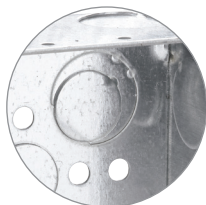
Article 314 of the National Electrical Code® (NEC®) covers the installation and use of boxes. The article includes table references that guide the electrician in the selection of the proper size box necessary to safely accommodate electrical service requirements. The box capacity table is reproduced in part from NEC as a quick reference and guide. The NEC should be consulted for complete details.

Outlet boxes for fixture or fan support:

A box, with or without a bracket or bar hanger, intended for support of a fixture/luminaire weighing 50 lbs. or less is marked "FOR FIXTURE/LUMINAIRE SUPPORT" on the carton to indicate that the box is intended for fixture/luminaire support. A box, with or without a bracket or bar hanger, intended for support of a fixture/luminaire weighing more than 50 lbs. is marked with the weight of the fixture/luminaire to be supported. Metallic device boxes and device plaster rings have not been investigated for support of a ceiling fixture/luminaire unless marked for use in ceilings, walls and with the weight of the product to be supported. Metallic device boxes intended to be installed in an existing structure have been investigated for the support of utilization equipment weighing not more than 6 lbs.

Knockouts:

Under File No. E-23156, Eaton's Crouse-Hinds Series concentric and "moon" KO style boxes, the following is stated "Suitable for bonding without any additional bonding means around concentric (or eccentric) knockouts where used in circuits above or below 250V."



Fire resistance rating wall penetrations:

Eaton's Crouse-Hinds Series products are produced in accordance with the requirements of UL514A, UL514B and UL514C, and are classified for fire resistance according to the standard, Fire Tests of Building Construction and Materials, ANSI/UL263, ASTM E 119 and NFPA 251. This listing is based on products when used in a fire rated (2 HR) wall or ceiling. Eaton's Crouse-Hinds Series steel boxes are listed with UL File No. E-23156 and Eaton's Crouse-Hinds Series non-metallic boxes are listed with UL File No. E-102328 and UL (2 HR fire rated) File No. R9933.

NEMA standards:

Eaton's Crouse-Hinds Series switch and outlet boxes comply with the requirements of NEMA Standard OS-1 and Federal Spec. W-J-800F.

Grounding hole:

The majority of Crouse-Hinds outlet boxes have at least one tapped #10-32 grounding hole.

Combination screw heads:

Cover and clamp screws have combination slotted/Phillips screw heads. Self-tapping screws provide for 100% thread engagement.



Third party certification information:

Third party certification documents can be found on the product detail page of the Crouse-Hinds website. Just click on the resource tab and click on the link to view the third party document. Document can then be saved or printed.

PRODUCT DETAILS

RESOURCES

CERTIFICATIONS

[▶ Complete technical specs and order info](#)

[Show all](#) [Hide all](#)

– Third Party Certification Documents

[▶ UL Certification](#)
[▶ Canadian Certification](#)

Outlet boxes

Standard materials – steel covers, outlet and switch boxes:

- Steel boxes and covers are made of .0625 inch thick pre-galvanized sheet steel
- Handy box covers are made of .030 inch thick galvanized sheet steel

Calculating box size and wire fill

Calculate the minimum box size:

NEC® 314.16 (A) and (B) describes the detailed way of counting wires, as well as clamps, fittings or devices (i.e., switches, receptacles, combination devices) – by establishing an equivalent conductor value for each. Those values are added together to get a total number of conductors. The minimum size box is the smallest one in Table 314.16(A) that can accommodate that number of conductors.

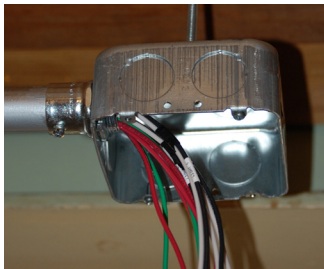
1. No matter how many ground wires come into a box, they only count as one conductor within the box.
2. Any wire running unbroken through the box counts as one wire.
3. Each wire coming into a splice device (crimp or twist-on type) is counted as one wire.
4. Each wire coming into the box and connecting to a device counts as one wire of that size.
5. Fixture studs, cable clamps and hickey are to be counted as one regardless of how many there may be. If a box contains two cable clamps, the total is only to be increased by one.
6. Where devices are mounted in the box, the total conductor count must be increased by two for each mounting strap.

Example #1:

Conduit Boxes: Supply power to a switch that will control a remote light with #14 conductors. Metal conduit and fittings will be used as the wire way. You must provide space for four conductors and one switch, totaling 6. Read across the line “Allowances” in the Box Fill table to column 6, then read down to the minimum cubic inches required for #14 conductor. This example requires a minimum of 12.0 cubic inches.

Example #2:

Cable Boxes: This example will illustrate how the minimum size is determined for a box with cable clamps fed by two #12-2 nonmetallic sheathed cables and supplying a 15A duplex receptacle. After supplying the receptacle, the conductors are extended to other outlets.



Circuit conductors.....	4
Ground conductors	1
Cable clamps	1
Device (receptacle)	2
Total	8

Using the Box Fill table from the next page, read across the line “Allowances” to column 8, then down to the minimum cubic inches required for #12 conductor. This example requires a minimum of 18.0 cubic inches.

Switch & outlet boxes – technical data

Table 314.16(A) metal boxes

Box dimension (in.) Trade Size or Type	Min.	Maximum number of conductors (arranged by AWG size)						
	Cu. in.	No. 18	No. 16	No. 14	No. 12	No. 10	No. 8	No. 6
4 X 1¼ round or octagonal	12.5	8	7	6	5	5	5	2
4 X 1½ round or octagonal	15.5	10	8	7	6	6	5	3
4 X 2⅝ round or octagonal	21.5	14	12	10	9	8	7	4
4 X 1¼ square	18.0	12	10	9	8	7	6	3
4 X 1½ square	21.0	14	12	10	9	8	7	4
4 X 2⅝ square	30.3	20	17	15	13	12	10	6
4⅞ X 1¼ square	25.5	17	14	12	11	10	8	5
4⅞ X 1½ square	29.5	19	16	14	13	11	9	5
4⅞ X 2⅝ square	42.0	28	24	21	18	16	14	8
3 X 2 x 1½ device	7.5	5	4	3	3	3	2	1
3 X 2 x 2 device	10.0	6	5	5	4	4	3	2
3 X 2 x 2¼ device	10.5	7	6	5	4	4	3	2
3 X 2 x 2½ device	12.5	8	7	6	5	5	4	2
3 X 2 x 2¾ device	14.0	9	8	7	6	5	4	2
3 X 2 x 3½ device	18.0	12	10	9	8	7	6	3
4 X 2⅝ x 1½ device	10.3	6	5	5	4	4	3	2
4 X 2⅝ x 1¾ device	13.0	8	7	6	5	5	4	2
4 X 2⅝ x 2¾ device	14.5	9	8	7	6	5	4	2
3¼ X 2 x 2½ masonry box/gang	14.0	9	8	7	6	5	4	2
3¼ X 2 x 3½ masonry box/gang	21.0	14	12	10	9	8	7	4
FS - 1¼ single cover gang	13.5	9	7	6	6	5	4	2
FD - 2¾ single cover gang	18.0	12	10	9	8	7	6	3
FS - 1¾ multiple cover gang	18.0	12	10	9	8	7	6	3
FD - 2¾ multiple cover gang	24.0	16	13	12	10	9	8	4

Table 314.16(B) volume required per conductor

Size of conductor	Free space within box for each conductor
No. 18	1.5 cubic inches
No. 16	1.75 cubic inches
No. 14	2 cubic inches
No. 12	2.25 cubic inches
No. 10	2.5 cubic inches
No. 8	3 cubic inches
No. 6	5 cubic inches

For SI units: one cubic inch = 16.4 cm³.

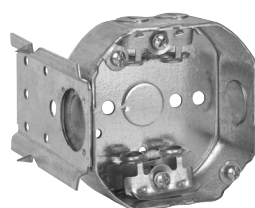
Reprinted with permission from NFPA 70-2005, the National Electrical Code®, Copyright® 2017 National Fire Protection Association, Quincy MA 02269. This reprinted material is not the complete and official position of the National Fire Protection Association, on the referenced subject which is represented only by the standard in its entirety. National Electrical Code® and NEC® are registered trademarks of the National Fire Protection Association, Inc., Quincy, MA 02269.

Switch & outlet boxes – technical data

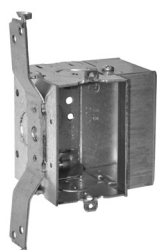
Outlet box brackets

Bracket technical data

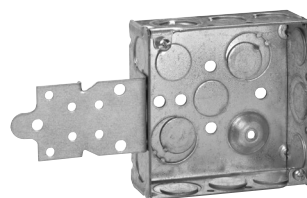
Bracket type	C	D	F	S	SD	VP	VS	MSB	SSB	VMS
Length	3 ⁵ / ₈	5 ¹³ / ₁₆	2 ⁷ / ₈	5 ¹³ / ₁₆	5 ⁹ / ₁₆	6 ⁵¹ / ₆₄	6 ⁵⁹ / ₆₄	2 ¹ / ₂	1 ¹ / ₄	6 ¹³ / ₁₆
Width	2 ¹ / ₂	7 ⁷ / ₈	1 ³ / ₄	7 ⁷ / ₈	1 ⁵ / ₁₆	1 ⁹ / ₁₆	1 ⁹ / ₁₆	1 ³ / ₈	2 ¹ / ₈	1 ³ / ₈
Set back	1 ¹ / ₄	5 ⁵ / ₈		5 ⁵ / ₈	5 ⁵ / ₈	3 ³ / ₈	7 ⁷ / ₈			5 ⁵ / ₁₆
For metal		✓	✓		✓		✓	✓	✓	✓
For wood	✓	✓	✓	✓	✓	✓	✓			✓
Stud mount	side/ceiling	side	face	side	side	side	side	face	face	side



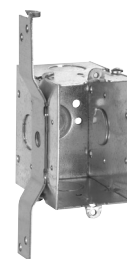
"C" bracket



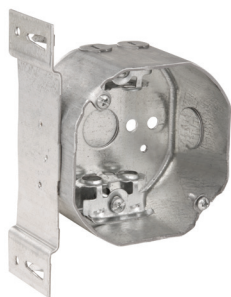
"D" bracket



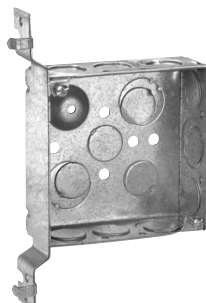
"F" bracket



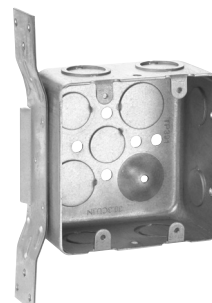
"S" bracket



"SD" bracket



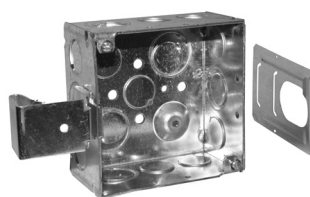
"VP" bracket



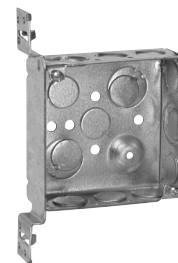
"VS" bracket



"MSB" bracket



"SSB" bracket



"VMS" bracket

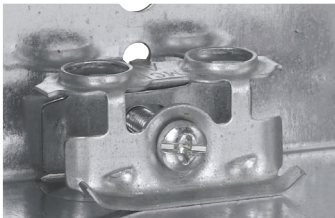



Switch & outlet boxes – technical data

Outlet box clamps

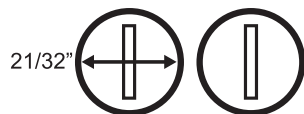
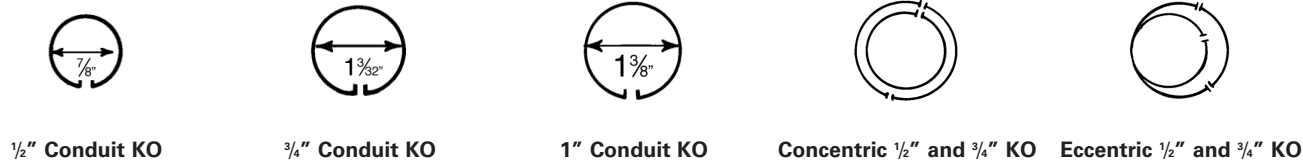
Clamp technical data

Clamp type	Raceway type					
	Armored cable (BX)		Metal clad interlocking cable (MCI)		Non-metallic sheathed cable	Flexible metallic conduit
	Steel	Aluminum	Steel	Aluminum		
MC-BX	#14-2 to 12/3	#14-2 to 10/2	#14-2 to 10/2	#14-2 to 10/2	—	$\frac{7}{32}$ " trade size
NM-1	—	—	—	—	#14-2 to #12-3 w/ground	—
NM-2	—	—	—	—	#14-2 to #12-3 w/ground	—
NM-4	—	—	—	—	#14-2 to #12-3 w/ground	—

Note: Applicable and listed Southwire Armorlite™ all purpose type MC cable and all purpose hospital care facility type HCF MC cable

For armored and metal clad interlocking cable (MCI)	For non-metallic cable		
			
MC-BX	NM-1	NM-2	NM-4

Outlet box entry knockout and pryouts



Cable pry-outs always in pairs

Conduit KOs have standard trade size dimensions. KOs are uniform and true for attachment of cable or conduit connectors. Pry-outs for cable entrance are slotted – a twist with screwdriver removes them. KOs and pry-outs are precision stamped to permit easy removal, but remain sufficiently strong and sturdy when not removed.

4" square drawn boxes feature a $\frac{1}{2}$ " and $\frac{3}{4}$ " "inverted" concentric KO – easily removed. Our 4" square welded boxes feature our $\frac{1}{2}$ " eccentric KO which also features easy removability of both the $\frac{1}{2}$ " and $\frac{3}{4}$ " KOs.

Note: These KOs are suitable for bonding without bonding jumpers around concentric (or eccentric) knockouts where used in circuits above or below 250V.

Steel square boxes

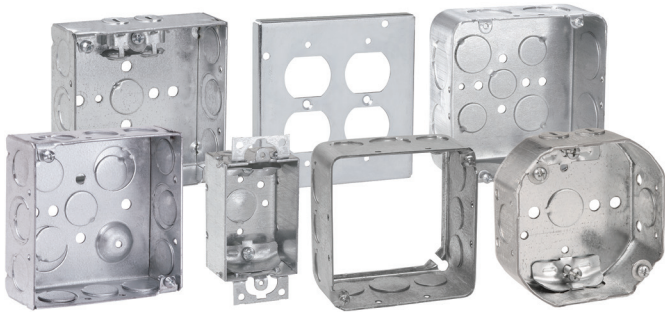
4" SQUARE OUTLET BOXES & COVERS

Applications:

- For use with conduit
- Available in red for fire alarm applications

Features:

- Ideal for exposed work applications, providing an easy method for the installation of electrical devices (switches, receptacles, fans, lights, etc.)
- Raised ground screw location in the welded boxes saves time in installation
- Available with pre-installed ground screws and pigtails for increased labor savings
- Knockouts are suitable for use without a bonding jumper in circuits above or below 250 volts
- Available in two depths for differing cubic capacity requirements
- Welded or drawn construction to match customer preference
- Extensive cover offering to meet various customer applications and needs



Certifications and compliances:

- UL Listed

4" SQUARE OUTLET BOXES – 18.0 CUBIC INCH CAPACITY

1 1/4" DEEP – FOR CONDUIT

UL LISTED



TP408

Steel boxes

Cat. #	Bracket	Description	Grounding method	Knockouts		Unit qty.	Wt. lbs. per 100
				Sides	Bottom		
TP408	-	Drawn	Tapped hole	12 – 1/2"	5 – 1/2"	50	61

Steel square boxes

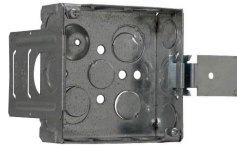
4" SQUARE OUTLET BOXES – 22.0 CUBIC INCH CAPACITY (WELDED) 21.0 CUBIC INCH CAPACITY (DRAWN)

1½" DEEP – FOR CONDUIT

UL LISTED



TP404/TP404PF



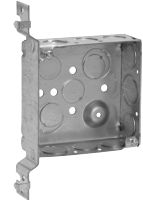
TP404SSB



TP404MSB



TP404RED



TP425



TP469



TP830^B



TP405



TP412
TP839^B



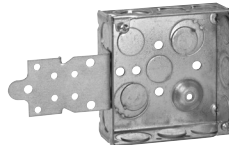
TP410



TP414RED



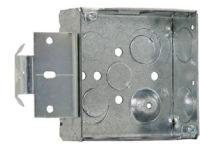
TP414



TP418



TP423RED



TP467MSB

Cat. #	Metal stud sizes	Bracket	Description	Grounding method	Knockouts		Unit qty.	Wt. lbs. per 100
					Sides	Bottom		
TP404	-	-	Welded	Ground bump	8 - ½", 4 - ½" + ¾" E	2 - ½", 2 - ½" + ¾" E	50	72
TP404G ^F	-	-	Welded	Ground bump with screw	8 - ½", 4 - ½" + ¾" E	2 - ½", 2 - ½" + ¾" E	50	72
TP404MSB	-	MSB	Welded	Ground bump	8 - ½", 4 - ½" + ¾" E	2 - ½", 2 - ½" + ¾" E	25	83
TP404RED	-	-	Welded	Ground bump	8 - ½", 4 - ½" + ¾" E	2 - ½", 2 - ½" + ¾" E	50	72
TP404REDMSB	-	MSB	Welded	Ground bump	8 - ½", 4 - ½" + ¾" E	2 - ½", 2 - ½" + ¾" E	25	83
TP404PF ^C ^E	-	-	Welded	Ground bump	8 - ½", 4 - ½" + ¾" E	2 - ½", 2 - ½" + ¾" E	50	72
TP404SSB	-	SSB	Welded	Ground bump	8 - ½", 4 - ½" + ¾" E	2 - ½", 2 - ½" + ¾" E	50	83
TP425	All	"VP"	Welded	Ground bump	6 - ½", 3 - ½" + ¾" E	2 - ½", 2 - ½" + ¾" E	25	82
TP425G ^F	All	"VP"	Welded	Ground bump with screw	6 - ½", 3 - ½" + ¾" E	2 - ½", 2 - ½" + ¾" E	25	82
TP423	All	"VMS"	Welded	Ground bump	6 - ½", 3 - ½" + ¾" E	2 - ½", 2 - ½" + ¾" E	25	81
TP423G ^F	All	"VMS"	Welded	Ground bump with screw	6 - ½", 3 - ½" + ¾" E	2 - ½", 2 - ½" + ¾" E	25	81
TP423RED	All	"VMS"	Welded	Ground bump	6 - ½", 3 - ½" + ¾" E	2 - ½", 2 - ½" + ¾" E	25	81
TP405	-	-	Drawn	Tapped hole	4 - ½", 6 - ½" + ¾" C	3 - ½", 2 - ¾"	50	67
TP410	-	-	Drawn	Tapped hole	12 - ½"	5 - ½"	50	67
TP412	-	-	Drawn	Tapped hole	8 - ¾"	3 - ½", 2 - ¾"	50	67
TP414	-	-	Drawn	Ground bump	8 - ½", 4 - ¾"	2 - ½", 2 - ¾"	50	67
TP414G ^F	-	-	Drawn	Ground bump with screw	8 - ½", 4 - ¾"	3 - ½", 2 - ¾"	50	67
TP414RED	-	-	Drawn	Ground bump	8 - ½", 4 - ¾"	3 - ½", 2 - ¾"	50	67
TP418	-	"F", set flush	Welded	Ground bump	6 - ½", 3 - ½" + ¾" E	2 - ½", 2 - ½" + ¾" E	25	84
TP467	-	-	Welded	Ground bump	8 - ¾"	2 - ½", 2 - ½" + ¾" E	50	72
TP467MSB	-	MSB	Welded	Ground bump	8 - ¾"	2 - ½", 2 - ½" + ¾" E	25	78
TP469	All	"VMS"	Welded	Ground bump	6 - ¾"	2 - ½", 2 - ½" + ¾" E	25	81
Air Plenum								
TP830 ^B	-	-	Drawn	Tapped screw	8 - ½", 4 - ¾"	3 - ½", 2 - ¾"	50	72
TP839 ^B	-	-	Drawn	Tapped screw	8 - ¾"	3 - ½", 2 - ¾"	50	72

^B For air plenum (no mounting holes) - not UL Listed.

^C cUL Listed.

^E TP catalog numbers ending in PF include ground screw with pigtail lead.

^F CSA certified.

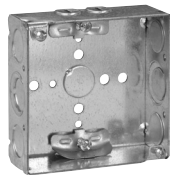
Steel square boxes

4" SQUARE OUTLET BOXES – 22.0 CUBIC INCH CAPACITY

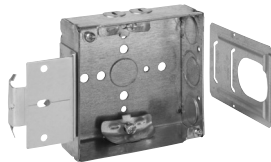
1½" DEEP

FOR NON-METALLIC CABLE – CLAMPS IN EACH END

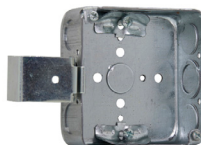
UL LISTED



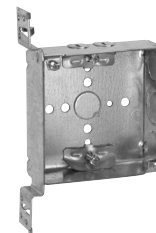
TP444



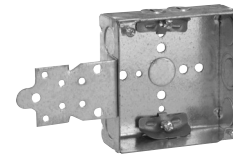
TP444MSB



TP444SSB



TP449



TP446

Cat. #	Bracket	Description	Knockouts		Unit qty.	Wt. lbs. per 100
			Sides	Bottom		
TP444	-	Welded	4 - cable, 4 - ½", 2 - ½" + ¾" E	1 - ½"	50	77
TP444MSB	MSB	Welded	4 - cable, 4 - ½", 2 - ½" + ¾" E	1 - ½"	25	81
TP444SSB	SSB	Welded	4 - cable, 4 - ½", 2 - ½" + ¾" E	1 - ½"	50	88
TP446	"F", set flush	Welded	4 - cable, 2 - ½", 1 - ½" + ¾" E	1 - ½"	25	88
TP449	"VMS"	Welded	4 - cable, 2 - ½", 1 - ½" + ¾" E	1 - ½"	25	85
TP449G [Ⓕ]	"VMS"	Welded	4 - Cable, 2 - ½", 1 - ½" + ¾" E	1 - ½"	25	85

Ⓕ CSA certified. G indicates ground screw installed.

4" SQUARE OUTLET BOXES – 22.0 CUBIC INCH CAPACITY

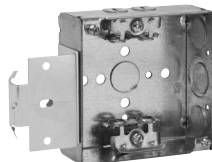
1½" DEEP

FOR ARMORED & METAL-CLAD (MCI) CABLE & HCF CABLE – CLAMPS IN EACH END

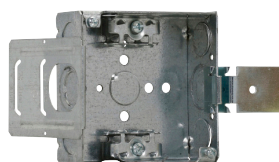
UL LISTED



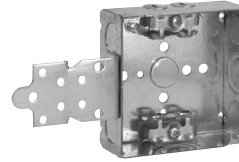
TP454



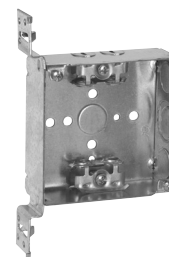
TP454MSB



TP454SSB



TP456



TP459

Cat. #	Bracket	Description	Knockouts		Unit qty.	Wt. lbs. per 100
			Sides	Bottom		
TP459	"VMS"	Welded	4 - cable, 2 - ½", 1 - ½" + ¾" E	1 - ½"	25	89
TP454 [Ⓐ]	-	Welded	4 - cable, 4 - ½", 2 - ½" + ¾" E	1 - ½"	50	81
TP454MSB [Ⓐ]	MSB	Welded	4 - cable, 4 - ½", 2 - ½" + ¾" E	1 - ½"	25	91
TP454G [Ⓐ] [Ⓕ]	-	Welded	4 - Cable, 4 - ½", 2 - ½" + ¾" E	1 - ½"	50	81
TP454PF [Ⓔ]	-	Welded	4 - cable, 4 - ½", 2 - ½" + ¾" E	1 - ½"	50	81
TP454SSB [Ⓐ]	SSB	Welded	4 - cable, 4 - ½", 2 - ½" + ¾" E	1 - ½"	25	82
TP456 [Ⓐ]	"F", set flush	Welded	4 - cable, 2 - ½", 1 - ½" + ¾" E	1 - ½"	25	92
TP456PF [Ⓔ]	"F", set flush	Welded	4 - cable, 2 - ½", 1 - ½" + ¾" E	1 - ½"	25	92

[Ⓐ] UL approved for use with aluminum interlocking grounding metal-clad cable, Type MCIA (Southwire MCAP™).

MCAP™ is a registered trademark of Southwire Company.

[Ⓔ] TP catalog numbers ending in PF include ground screw with pigtail lead.

[Ⓕ] CSA certified. G indicates ground screw installed.

Steel square boxes

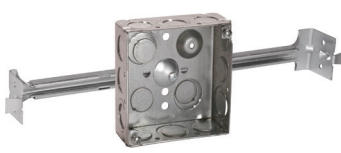
4" SQUARE OUTLET BOXES – 30.3 CUBIC INCH CAPACITY

2 1/8" DEEP – FOR CONDUIT

UL LISTED



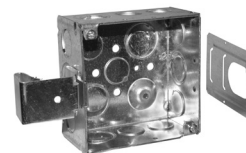
TP403/TP403PF



TP403BH



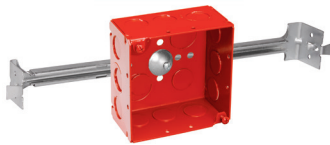
TP403MSB



TP403SSB



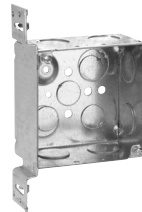
TP403RED



TP403REDBH



TP432



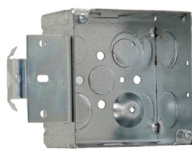
TP432VMS



TP434



TP438/TP831



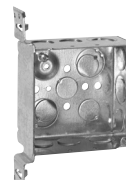
TP432MSB



TP434RED



TP451RED



TP451

Cat. #	Bracket	Description	Grounding method	Knockouts		16" Fixture weight (lbs.)	24" Fixture weight (lbs.)	Unit qty.	Wt. lbs. per 100
				Sides	Bottom				
TP403	-	Welded	Ground bump	8 - 1/2", 4 - 1/2" + 3/4" E	2 - 1/2", 2 - 1/2" + 3/4" E	-	-	25	84
TP403BH	-	Welded	Ground bump	8 - 1/2", 4 - 1/2" + 3/4" E	2 - 1/2", 2 - 1/2" + 3/4" E	50	50	25	84
TP403G	-	Welded	Grnd bump w/screw	8 - 1/2", 4 - 1/2" + 3/4" E	2 - 1/2", 2 - 1/2" + 3/4" E	-	-	25	84
TP403MSB	MSB	Welded	Ground bump	8 - 1/2", 4 - 1/2" + 3/4" E	2 - 1/2", 2 - 1/2" + 3/4" E	-	-	25	95
TP403RED	-	Welded	Ground bump	8 - 1/2", 4 - 1/2" + 3/4" E	2 - 1/2", 2 - 1/2" + 3/4" E	-	-	25	84
TP403REDBH	-	Welded	Ground bump	8 - 1/2", 4 - 1/2" + 3/4" E	2 - 1/2", 2 - 1/2" + 3/4" E	50	50	25	84
TP403REDMSB	MSB	Welded	Ground bump	8 - 1/2", 4 - 1/2" + 3/4" E	2 - 1/2", 2 - 1/2" + 3/4" E	-	-	25	95
TP403PF	-	Welded	Ground bump	8 - 1/2", 4 - 1/2" + 3/4" E	2 - 1/2", 2 - 1/2" + 3/4" E	-	-	25	84
TP403SSB	SSB	Welded	Ground bump	8 - 1/2", 4 - 1/2" + 3/4" E	2 - 1/2", 2 - 1/2" + 3/4" E	-	-	25	95
TP432	-	Welded	Ground bump	8 - 3/4"	2 - 1/2", 2 - 1/2" + 3/4" E	-	-	25	84
TP432G	-	Welded	Grnd bump w/screw	8 - 3/4"	2 - 1/2", 2 - 1/2" + 3/4" E	-	-	25	84
TP432RED	-	Welded	Ground bump	8 - 3/4"	2 - 1/2", 2 - 1/2" + 3/4" E	-	-	25	84
TP432MSB	MSB	Welded	Ground bump	8 - 3/4"	2 - 1/2", 2 - 1/2" + 3/4" E	-	-	25	95
TP432REDMSB	MSB	Welded	Ground bump	8 - 3/4"	2 - 1/2", 2 - 1/2" + 3/4" E	-	-	25	95
TP432VMS	"VMS"	Welded	Ground bump	6 - 3/4"	2 - 1/2", 2 - 1/2" + 3/4" E	-	-	25	99
TP436	-	Welded	Ground bump	8 - 1"	2 - 1/2", 2 - 1/2" + 3/4" E	-	-	25	84
TP436G	-	Welded	Grnd bump w/screw	8 - 1"	2 - 1/2", 2 - 1/2" + 3/4" E	-	-	25	84
TP436MSB	MSB	Welded	Ground bump	8 - 1"	2 - 1/2", 2 - 1/2" + 3/4" E	-	-	25	95
TP434	-	Drawn	Ground bump	8 - 1/2", 4 - 3/4"	3 - 1/2", 2 - 3/4"	-	-	25	84
TP434G	-	Drawn	Grnd bump w/screw	8 - 1/2", 4 - 3/4"	3 - 1/2", 2 - 3/4"	-	-	25	84
TP434RED	-	Drawn	Ground bump	8 - 1/2", 4 - 3/4"	3 - 1/2", 2 - 3/4"	-	-	25	84
TP438	-	Drawn	Ground bump	4 - 1/2", 6 - 1/2" + 3/4" C	3 - 1/2", 2 - 3/4"	-	-	25	84
TP438G	-	Drawn	Grnd bump w/screw	4 - 1/2", 6 - 1/2" + 3/4" C	3 - 1/2", 2 - 3/4"	-	-	25	84
TP438PF	-	Drawn	Ground bump	4 - 1/2", 6 - 1/2" + 3/4" C	3 - 1/2", 2 - 3/4"	-	-	25	84
TP451	"VMS"	Welded	Ground bump	6 - 1/2", 3 - 1/2" + 3/4" E	2 - 1/2", 2 - 1/2" + 3/4" E	-	-	25	96
TP451G	"VMS"	Welded	Grnd bump w/screw	6 - 1/2", 3 - 1/2" + 3/4" E	2 - 1/2", 2 - 1/2" + 3/4" E	-	-	25	96
TP451PF	"VMS"	Welded	Ground bump	6 - 1/2", 3 - 1/2" + 3/4" E	2 - 1/2", 2 - 1/2" + 3/4" E	-	-	25	96
TP451RED	"VMS"	Welded	Ground bump	6 - 1/2", 3 - 1/2" + 3/4" E	2 - 1/2", 2 - 1/2" + 3/4" E	-	-	25	96
TP437	"VP"	Welded	Ground bump	6 - 1/2", 3 - 1/2" + 3/4" E	2 - 1/2", 2 - 1/2" + 3/4" E	-	-	25	98
Air Plenum									
TP831	-	Drawn	Ground bump	8 - 1/2", 4 - 3/4"	3 - 1/2", 2 - 3/4"	-	-	25	90

^B For Air Plenum (no mounting holes) - not UL Listed.

^C UL Listed.

^E TP catalog numbers ending in PF include ground screw with pigtail lead.

^F CSA certified.

Steel square boxes

4" SQUARE OUTLET BOXES – 30.3 CUBIC INCH CAPACITY

2 1/8" DEEP

FOR NON-METALLIC CABLE – CLAMPS IN EACH END

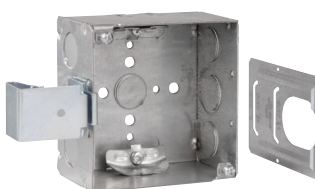
UL LISTED



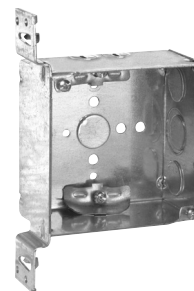
TP450



TP450MSB



TP450SSB



TP452

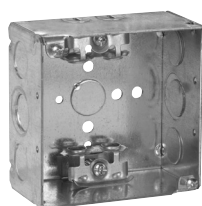
Cat. #	Bracket	Description	Knockouts		Unit qty.	Wt. lbs. per 100
			Sides	Bottom		
TP450	-	Welded	4 - cable, 4 - 1/2", 2 - 1/2" + 3/4" E	1 - 1/2"	25	90
TP450MSB	MSB	Welded	4 - cable, 4 - 1/2", 2 - 1/2" + 3/4" E	1 - 1/2"	25	101
TP450SSB	SSB	Welded	4 - cable, 4 - 1/2", 2 - 1/2" + 3/4" E	1 - 1/2"	25	101
TP452	"VMS"	Welded	4 - cable, 2 - 1/2", 1 - 1/2" + 3/4" E	1 - 1/2"	25	104

4" SQUARE OUTLET BOXES – 30.3 CUBIC INCH CAPACITY

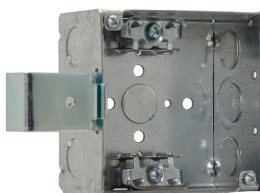
2 1/8" DEEP

FOR ARMORED & METAL-CLAD (MCI) CABLE & HCF CABLE – CLAMPS IN EACH END

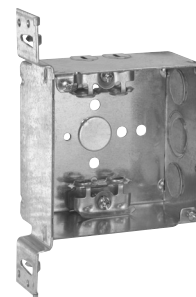
UL LISTED



TP431



TP431SSB



TP440

Cat. #	Metal stud sizes	Bracket	Description	Knockouts		Unit qty.	Wt. lbs. per 100
				Sides	Bottom		
TP431 ^A	-	-	Welded	4 - cable, 4 - 1/2", 2 - 1/2" & 3/4" E	1 - 1/2"	25	91
TP431G ^{A F}	-	-	Welded	4 - cable, 4 - 1/2", 2 - 1/2" & 3/4" E	1 - 1/2"	25	91
TP431PF ^E	-	-	Welded	4 - cable, 4 - 1/2", 2 - 1/2" & 3/4" E	1 - 1/2"	25	91
TP431MSB ^A	-	MSB	Welded	4 - cable, 4 - 1/2", 2 - 1/2" & 3/4" E	1 - 1/2"	25	91
TP431SSB ^A	-	SSB	Welded	4 - cable, 4 - 1/2", 2 - 1/2" & 3/4" E	1 - 1/2"	25	102
TP440 ^A	All	"VMS"	Welded	4 - cable, 2 - 1/2", 1 - 1/2" & 3/4" E	1 - 1/2"	25	103
TP440G ^{A F}	All	"VMS"	Welded	4 - cable, 2 - 1/2", 1 - 1/2" & 3/4" E	1 - 1/2"	25	103

^A UL approved for use with aluminum interlocking grounding metal-clad cable, Type MCIA (Southwire MCAP[™]).

MCAP[™] is a registered trademark of Southwire Company.

^E TP catalog numbers ending in PF include ground screw with pigtail lead.

^F CSA certified. G indicates ground screw installed.

Steel square boxes

4" SQUARE TWO DEVICE BOXES – 30.3 CUBIC INCH CAPACITY

2 1/8" DEEP – FOR CONDUIT

UL LISTED



TP391



TP395

Cat. #	Bracket	Description	Grounding method	Knockouts		Unit qty.	Wt. lbs. per 100
				Sides	Bottom		
TP391	"VS", set 7/8"	Drawn	Ground bump	6 - 1/2", 3 - 3/4"	3 - 1/2", 2 - 3/4"	25	95
TP395	-	Drawn	Ground bump	8 - 1/2", 4 - 3/4"	3 - 1/2", 2 - 3/4"	25	84

4" SQUARE OUTLET BOXES – 50.0 CUBIC INCH CAPACITY

3 1/2" DEEP – FOR CONDUIT

UL LISTED, FILE NO. E-15022

Applications:

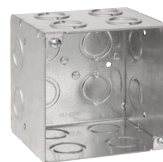
- 4" square, 3 1/2" deep outlet boxes are ideal for applications requiring increased capacity, including the installation of speaker boxes, fire alarms, strobes, security cameras and other oversized devices
- For use with rigid/IMC and EMT conduit



TP411



TP411RED



TP413



TP413RED

Cat. #	Bracket	Description	Grounding method	Knockouts		Unit qty.	Wt. lbs. per 100
				Sides	Bottom		
TP411 [Ⓢ]	"S"	Welded	Tapped hole	10 - 1/2" + 3/4" C	4 - 1/2" + 3/4" C	10	138
TP411RED [Ⓢ]	"S"	Welded	Tapped hole	10 - 1/2" + 3/4" C	4 - 1/2" + 3/4" C	10	145
TP413 [Ⓢ]	-	Welded	Ground bump	8 - 1/2" + 3/4" C, 4 - 3/4", 4 - 1"	2 - 1/2" + 2 - 3/4"	10	113
TP413RED [Ⓢ]	-	Welded	Ground bump	8 - 1/2" + 3/4" C, 4 - 3/4", 4 - 1"	2 - 1/2" + 2 - 3/4"	20	120

[Ⓢ]cUL Listed.

Steel boxes

Steel square covers

4" SQUARE EXTENSION RINGS

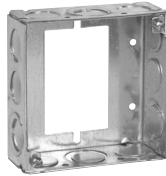
1½" DEEP WITH CONDUIT KNOCKOUTS – 21.0 CUBIC INCH CAPACITY

2⅛" DEEP WITH CONDUIT KNOCKOUTS – 30.3 CUBIC INCH CAPACITY

UL LISTED



TP424



TP422[ⓑ]



TP426



TP428RED



TP443



TP428, TP833[ⓑ]

	Knockouts		Unit qty.	Wt. lbs. per 100
Cat. #	Sides	Bottom		
1½" deep				
TP424	12 - ½"	-	50	46
TP426	8 - ¾"	-	50	46
TP428	8 - ½", 4 - ¾"	-	50	46
TP428RED	8 - ½", 4 - ¾"	-	50	46
TP833 ②	8 - ½", 4 - ¾"	-	50	48
2⅛" deep				
TP443 ②	8 - ½", 4 - ¾"	-	25	66
TP465 ②	8 - 1"	-	25	60
1½" deep switch & masonry box extension ring				
TP422 ② ③	8 - ½", 4 - ½" + ¾" E	-	50	50

[ⓑ] For air plenum (no mounting holes). Requires the use of TP854; purchase separately - not UL Listed.

[ⓓ] For use as extension with switch box, not four square box.

[ⓓ] CSA certified.

Steel boxes

FLEXIBLE FIXTURE HANGERS

TPSFH square flexible fixture hangers are used in commercial or light industrial applications where HID high bay and low bay lighting fixtures are used. Specific applications include storage facilities, shipping warehouses, retail and DIY facilities.

Features:

- Suitable for use with ½" or ¾" fixture conduit stems, these hangers allow the conduit stem of the fixture (luminaire) to swing in any direction; maximum swing angle is 26° from vertical max. slope angles 22½°
- Available for attachment to 4" square steel boxes
- Quickly and easily attached by two screws
- Hangers are drilled and tapped for use with ¾" conduit stem as standard and come supplied with a ¾" - ½" reducer for ½" conduit stem applications

Certifications and compliances:

- UL1598
- CSA C22.2 No. 250
- Suitable for damp locations

Standard materials and finishes:

- Material – sheet steel
- Finish – zinc chromate for corrosion resistance



Cat. #	Description	Support Wt. (lbs.)
TPSFH12	For use with 4" Square Boxes	50

Steel square covers

COVERS FOR 4" SQUARE BOXES – CUBIC INCH CAPACITY (SEE BELOW)

UL LISTED

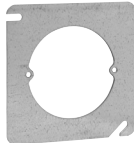
#8-32 screw used on covers



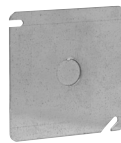
TP472



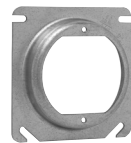
TP472RED



TP474



TP478
TP487



TP473, TP475, TP476,
TP477, TP479, TP483



TP850^B



TP854^B



AMR0

Cat. #	Description	Unit qty.	Wt. lbs. per 100	Capacity cu. in.
TP472 ^H	Flat blank	50	31	-
TP472RED	Flat blank, red	50	31	-
TP474 ^H	Flat, open with ears 2 3/4"	50	21	-
TP478 ^H	Flat, with 1/2" KO	50	31	-
TP478RED ^H	Flat, with 1/2" KO	50	31	-
TP487 ^H	Flat, with 3/4" KO	50	29	-
TP473 ^H	Raised 1/4", open with ears 2 3/4"	50	23	1.3
TP476 ^H	Raised 1/2", open with ears 2 3/4"	50	26	4.0
TP477 ^H	Raised 5/8", open with ears 2 3/4"	50	27	5.0
TP475 ^H	Raised 3/4", open with ears 2 3/4"	25	31	6.0
TP479 ^H	Raised 1", open with ears 2 3/4"	25	34	7.0
TP483 ^{C H}	Raised 1 1/4", open with ears 2 3/4"	25	31	9.5
AMR0 ^I	3/4" - 1 1/2" round adjustable mud ring	25	44	6.1
Air Plenum				
TP850 ^B	Flat blank gasketed with captive screws	25	31	-
TP854 ^B	Flat ring double gasketed	25	12	-

^B For air plenum (no mounting holes) - not UL Listed.

^C cUL Listed.

^I ETL listed.

^H CSA certified.

MUD RINGS FOR 4" SQUARE STEEL OUTLET BOXES

UL LISTED



TP480



TP482, TP484,
TP486, TP489



TP494



TP488, TP490



TP496



TP501, TP502



AMR1



AMR2



AMR158

Cat. #	Description	Unit qty.	Wt. lbs. per 100	Capacity cu. in.
One Device				
TP480 ^H	Flat	50	20	-
TP482 ^H	1/4" raised	50	21	1.8
TP484 ^H	1/2" raised	50	23	3.8
TP489 ^H	5/8" raised	50	26	4.3
TP489RED ^H	5/8" raised	50	26	4.3
TP486 ^H	3/4" raised	50	30	5.5
TP488 ^H	1" raised	50	34	6.8
TP490 ^H	1 1/4" raised	25	39	8.5
AMR1 ^C	3/4" - 1 1/2" raised adjustable	25	47	-
AMR158 ^C	5/8" - 1 1/4" raised adjustable	25	44	6.0
Two Device				
TP494 ^H	Flat	50	12	-
TP496 ^{H K}	1/4" raised	50	13	3.0
TP498 ^{H K}	1/2" raised	50	18	6.0
TP499 ^{H K}	5/8" raised	50	22	8.0
TP500 ^{H K}	3/4" raised	50	24	9.0
TP501 ^H	1 1/4" raised	25	31	14.0
TP502 ^H	1" raised	25	30	11.7
AMR2 ^C	5/8" - 1 1/2" raised adjustable	25	50	11.3

^C cUL Listed.

^H CSA certified.

^K Slotted design for use with 4" square box partitions.

Steel square covers

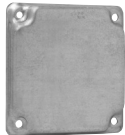
4" SQUARE SURFACE COVERS – 5.5 CUBIC INCH CAPACITY

RAISED 1/2"

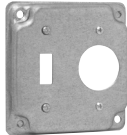
UL LISTED

CSA LISTED

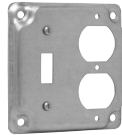
Screw(s) provided in raised cover kit are for use with the center hole on duplex receptacles. Nuts that are provided in kit are to be used in conjunction with the screws that are provided as standard packaging with devices to mount device to raised cover. For GFCI device installation, no screw is needed; please disregard.



TP503



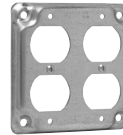
TP504



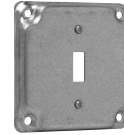
TP506



TP508



TP510



TP512



TP507, TP514,
TP519



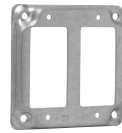
TP516



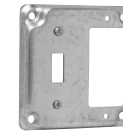
TP509 (4 screws),
TP518 (2 screws)



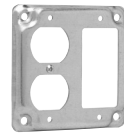
TP513



TP511



TP515



TP517

Cat. #	Description	Unit qty.	Wt. lbs. per 100
TP503	Raised blank	50	35
TP504	For one toggle switch and one single receptacle 1 13/32" (1.406) dia.	50	31
TP506	For one toggle switch and one duplex receptacle	50	31
TP508	For two toggle switches	50	35
TP510	For two duplex receptacles	50	26
TP512	For one toggle switch	50	35
TP507	For one single receptacle 1 19/32" (1.594) dia.	50	37
TP514	For one single receptacle 1 13/32" (1.406) dia.	50	34
TP519	For one power outlet 1 23/32" (1.719) dia.	50	37
TP516	For one duplex receptacle	50	31
TP509	For one power outlet 2 7/16" (2.438) dia.	50	23
TP518	For one power outlet 2 3/4" (2.141) dia.	50	34
TP513	For one GFCI receptacle	50	31
TP511	For two GFCI receptacles	50	26
TP515	For one toggle switch and one GFCI receptacle	50	31
TP517	For one duplex receptacle and one GFCI receptacle	50	26

Steel square covers

UNI-MOUNT™ COVERS

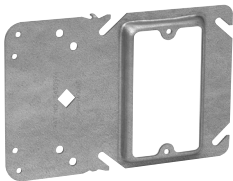
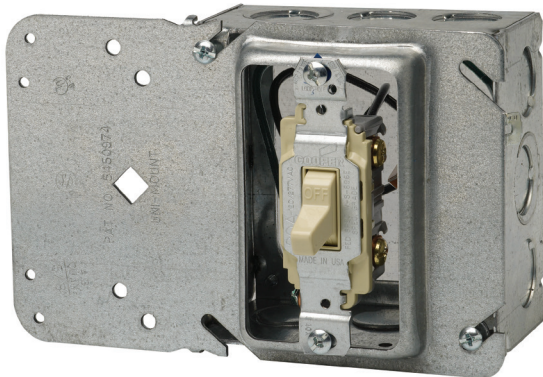
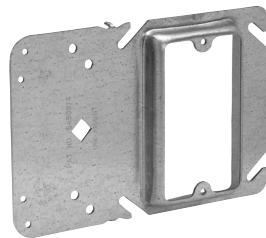
The Uni-Mount combines the features of a mounting device plate with those of a box support, giving you one universal plate for all of your needs. Specifically designed for use with metal or wood studs:

The new and improved version incorporates four small holes on the left side (support side) of the bracket. These holes allow for the attachment of box mounting brackets to allow for use of both sides of the stud. The holes are strategically located to accept either the Eaton's B-Line Series BB423 bracket or the Caddy H23 bracket. Additionally, the viewing hole has been significantly enlarged (and is now diamond shaped) to make it even easier to find mark lines on the stud.

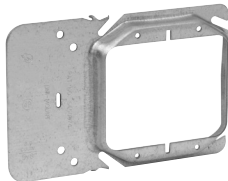
Features:

- Guide tabs ensure consistent alignment on stud
- Stud alignment hole ensures consistent mounting height
- Rigid bracket design eliminates the need for far side support
- Available as a single or two device cover
- Universal design fits all 4" square boxes
- Available in 1/2", 5/8" and 3/4" raised
- Can be ordered pre-assembled to popular 4" square boxes
- Fast and easy installation
- Can be used in multiple applications, resulting in less items to stock
- Less labor intensive
- Less material handling
- No multiple assemblies to handle
- Can be used in Class II communications outlets for low voltage without a box
- UL Listed and CSA certified^L
- UL File No. E-23156

^LCSA requires a far side support.



Single gang



Two gang

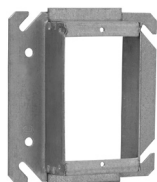
Cat. #	Description	Capacity cu. in.	Unit qty.	Wt. lbs. per 100
Single Gang				
TP30000	1/2" raised	3.8	50	43
TP31000	5/8" raised	4.3	50	46
TP32000	3/4" raised	5.5	50	50
Two Gang				
TP35000	1/2" raised	6.0	50	38
TP36000	5/8" raised	8.0	50	52
TP37000	3/4" raised	9.0	50	54
Low profile screws – reduces risk of sheetrock bulge				
TP710	L.P. screws	-	1000	0.5

Steel square covers

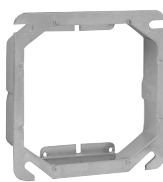
TILE WALL COVERS FOR 4" SQUARE BOXES – CUBIC INCH CAPACITY (SEE BELOW)

UL LISTED

CSA LISTED



TP524



TP534



TP540

Applications:

- Typically used with tile or brick

Features:

- Rounded corners help guide cuts around devices

Cat. #	Description	Capacity cu. in.	Unit qty.	Wt. lbs. per 100
One device				
TP520	1/2" raised	3.7	50	30
TP522	3/4" raised	5.5	50	36
TP524	1" raised	7.4	50	40
TP526	1 1/4" raised	9.3	25	46
TP528	1 1/2" raised	11.0	25	50
TP530	2" Raised	14.8	25	62
Two device				
TP532	1/2" raised	5.0	10	24
TP534	3/4" raised	7.8	10	30
TP536	1" raised	10.3	10	36
TP538	1 1/4" raised	13.0	10	44
TP540	1 1/2" raised	15.5	10	50
TP542	2" raised	20.8	10	66

4" SQUARE BOX PARTITIONS



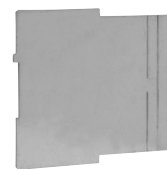
TP860



TP861



TP862



TP863

Cat. #	Description	Unit qty.	Wt. lbs. per 100
For 1 1/2" deep box with square cut tile wall two gang covers			
TP860	For 1/2", 3/4", 1" raised covers	25	13
TP861	For 1 1/4", 1 1/2", 2" raised covers	25	18
For 2 1/4" deep box with square cut tile wall two gang covers			
TP862	For 1/2", 3/4", 1" raised covers	25	16
TP863	For 1 1/4", 1 1/2", 2" raised covers	25	21

Steel square boxes

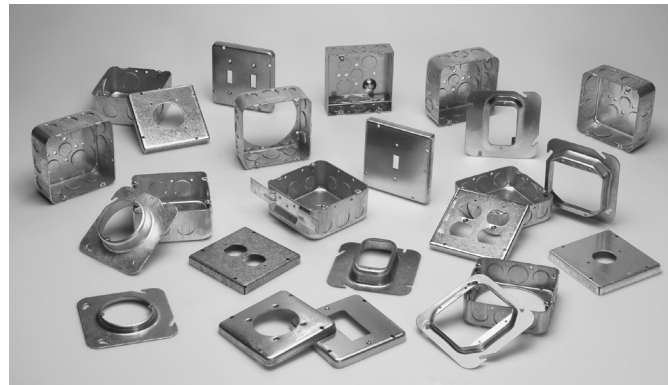
4¹¹/₁₆" SQUARE OUTLET BOXES & COVERS

Applications:

- For use with conduit
- For use in commercial and industrial applications, where larger sized conductor or wiring devices are needed and additional volume is required
- Available in red for fire alarm applications

Features:

- Ideal for exposed work applications, providing an easy method for the installation of electrical devices (switches, receptacles, fans, lights, etc.)
- Raised ground screw location in the welded boxes saves time in installation
- Concentric knockouts have a 1/2" and 3/4" knockout in the same location for customer flexibility
- Knockouts are suitable for use without a bonding jumper in circuits above or below 250 volts
- Available in two depths for differing cubic capacity requirements
- Welded or drawn construction to match customer preference
- Extensive cover offering to meet various customer applications and needs



Certifications and compliances:

- UL Listed

4¹¹/₁₆" SQUARE OUTLET BOXES – 29.5 CUBIC INCH CAPACITY

1 1/2" DEEP WITH CONDUIT KOs

UL LISTED



TP548



TP549

Cat. #	Description	Grounding method	Knockouts		Unit qty.	Wt. lbs. per 100
			Sides	Bottom		
TP548	Drawn	-	8 - 1/2", 4 - 3/4"	3 - 1/2", 2 - 3/4"	25	84
TP548G [Ⓞ]	Drawn	-	8 - 1/2", 4 - 3/4"	3 - 1/2", 2 - 3/4"	25	84
TP549 [Ⓞ]	Drawn	Ground bump	8 - 1/2", 4 - 1/2" + 3/4" C	3 - 1/2", 2 - 3/4"	25	75
TP549G [Ⓞ]	Drawn	Ground bump	6 - 1/2", 6 - 1/2" + 3/4" C	3 - 1/2", 2 - 3/4"	25	84

[Ⓞ]cUL Listed.

[Ⓢ]CSA certified. G indicates ground screw installed.

Steel square boxes

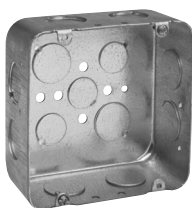
4¹¹/₁₆" SQUARE OUTLET BOXES – 42.0 & 44.0 CUBIC INCH CAPACITY

2¹/₈" DEEP WITH CONDUIT KOs

UL LISTED



TP563



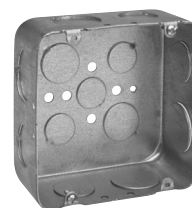
TP554
TP842^G



TP556
TP832^G



TP556RED



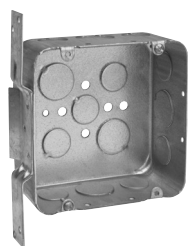
TP558
TP835^G



TP560
TP836^G



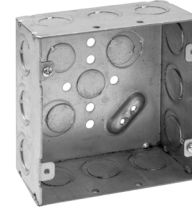
TP562



TP557



TP521



TP525

Steel boxes

Cat. #	Bracket	Description	Grounding method	Knockouts		Unit qty.	Wt. lbs. per 100
				Sides	Bottom		
42.0 cubic inch capacity							
TP563	-	Drawn	-	6 - 1/2", 6 - 1/2" + 3/4" C	3 - 1/2", 2 - 3/4"	25	104
TP563G ❹	-	Drawn	-	6 - 1/2", 6 - 1/2" + 3/4" C	3 - 1/2", 2 - 3/4"	25	104
TP554	-	Drawn	-	8 - 3/4"	3 - 1/2", 2 - 3/4"	25	104
TP554G ❹	-	Drawn	-	8 - 3/4"	3 - 1/2", 2 - 3/4"	25	104
TP556	-	Drawn	-	8 - 1/2", 4 - 3/4"	3 - 1/2", 2 - 3/4"	25	104
TP556G ❹	-	Drawn	-	8 - 1/2", 4 - 3/4"	3 - 1/2", 2 - 3/4"	25	104
TP556PF ❸	-	Drawn	-	8 - 1/2", 4 - 3/4"	3 - 1/2", 2 - 3/4"	25	104
TP556RED	-	Drawn	-	8 - 1/2", 4 - 3/4"	3 - 1/2", 2 - 3/4"	25	104
TP558	-	Drawn	-	4 - 3/4", 4 - 1"	3 - 1/2", 2 - 3/4"	25	104
TP558G ❹	-	Drawn	-	4 - 3/4", 4 - 1"	3 - 1/2", 2 - 3/4"	25	104
TP558PF ❸	-	Drawn	-	4 - 3/4", 4 - 1"	3 - 1/2", 2 - 3/4"	25	104
TP560	-	Drawn	-	8 - 1"	3 - 1/2", 2 - 3/4"	25	104
TP560G ❹	-	Drawn	-	8 - 1"	3 - 1/2", 2 - 3/4"	25	104
TP562 ❹	-	Drawn	-	4 - 1 1/4"	3 - 1/2", 2 - 3/4"	25	104
TP557	"VS"	Drawn	-	5 - 1/2", 4 - 1/2" + 3/4" C	3 - 1/2", 2 - 3/4"	25	120
44.0 cubic inch capacity							
TP521	-	Welded	Ground bump	12 - 1/2" + 3/4" C	2 - 1/2", 2 - 3/4"	25	115
TP521PF ❸	-	Welded	Ground bump	12 - 1/2" + 3/4" C	2 - 1/2", 2 - 3/4"	25	115
TP525 ❹	-	Welded	Ground bump	12 - 1/2" + 3/4" E	2 - 1/2", 2 - 1/2" + 3/4" E	25	115
TP525PF ❸	-	Welded	Ground bump	12 - 1/2" + 3/4" E	2 - 1/2", 2 - 1/2" + 3/4" E	25	115
Air plenum							
TP835 ❹	-	Drawn	-	4 - 3/4", 4 - 1"	3 - 1/2", 2 - 3/4"	25	115
TP836 ❹	-	Drawn	-	8 - 1"	3 - 1/2", 2 - 3/4"	25	115
TP842 ❹	-	Drawn	-	12 - 3/4"	3 - 1/2", 2 - 3/4"	25	115
TP832 ❹	-	Drawn	-	8 - 1/2", 4 - 3/4"	3 - 1/2", 2 - 3/4"	25	115

^B For air plenum (no mounting holes) - not UL Listed.

^G Not UL Listed.

^R Raised ground bump contains holes for two ground screws.

^E TP catalog numbers ending in PF include ground screw with pigtail lead.

^F CSA certified. G indicates ground screw installed.

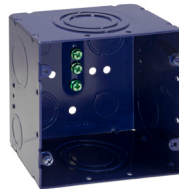
Steel square covers

4¹¹/₁₆" SQUARE OUTLET BOXES

3" DEEP WITH CONDUIT KOs – 60.0 CUBIC INCH CAPACITY

3³/₄" DEEP WITH CONDUIT KOs – 66.0 CUBIC INCH CAPACITY

UL LISTED



TP72181-DTA-BLUE



TP72181-DTA-RED

Cat. #	Box size	Box depth	Brkt.	Descrip.	Grounding method	Cap. cu. in.	Knockouts	
							Sides	Bottom
Standard unpainted boxes								
TP72181-1-1/4Ⓒ	4 ¹¹ / ₁₆ " sq.	3"	-	Welded	Ground bump	60.0	8 - 1 ¹ / ₄ "	2 - 1 ¹ / ₂ ", 2 - 3 ³ / ₄ "
TP72181-1-1/2Ⓒ	4 ¹¹ / ₁₆ " sq.	3"	-	Welded	Ground bump	60.0	4 - 1 ¹ / ₂ "	2 - 1 ¹ / ₂ ", 2 - 3 ³ / ₄ "
TP72181-DTAⒸ	4 ¹¹ / ₁₆ " sq.	3 ³ / ₄ "	-	Welded	Ground screw	66.0	2 - 1 ¹ / ₂ " + 3 ³ / ₄ " C, 2 - 1" + 1 ¹ / ₄ " C, 2 - 1" + 1 ¹ / ₄ " + 1 ¹ / ₂ " + 2" C	2 - 1 ¹ / ₂ ", 2 - 3 ³ / ₄ " + 1" C
TP72181-DTABⒸ	4 ¹¹ / ₁₆ " sq.	3 ³ / ₄ "	AB	Welded	Ground screw	66.0	2 - 1 ¹ / ₂ " + 3 ³ / ₄ " C, 2 - 1" + 1 ¹ / ₄ " C, 2 - 1" + 1 ¹ / ₄ " + 1 ¹ / ₂ " + 2" C	2 - 1 ¹ / ₂ ", 2 - 3 ³ / ₄ " + 1" C
Blue communications boxes								
TP72181-1-1/4-BLUEⒸ	4 ¹¹ / ₁₆ " sq.	3"	-	Welded	Ground bump	60.0	8 - 1 ¹ / ₄ "	2 - 1 ¹ / ₂ ", 2 - 3 ³ / ₄ "
TP72181-1-1/2-BLUEⒸ	4 ¹¹ / ₁₆ " sq.	3"	-	Welded	Ground bump	60.0	4 - 1 ¹ / ₂ "	2 - 1 ¹ / ₂ ", 2 - 3 ³ / ₄ "
TP72181-DTA-BLUEⒸ	4 ¹¹ / ₁₆ " sq.	3 ³ / ₄ "	-	Welded	Ground screw	66.0	2 - 1 ¹ / ₂ " + 3 ³ / ₄ " C, 2 - 1" + 1 ¹ / ₄ " C, 2 - 1" + 1 ¹ / ₄ " + 1 ¹ / ₂ " + 2" C	2 - 1 ¹ / ₂ ", 2 - 3 ³ / ₄ " + 1" C
TP72181-DTAB-BLUEⒸ	4 ¹¹ / ₁₆ " sq.	3 ³ / ₄ "	AB	Welded	Ground screw	66.0	2 - 1 ¹ / ₂ " + 3 ³ / ₄ " C, 2 - 1" + 1 ¹ / ₄ " C, 2 - 1" + 1 ¹ / ₄ " + 1 ¹ / ₂ " + 2" C	2 - 1 ¹ / ₂ ", 2 - 3 ³ / ₄ " + 1" C
Red fire signal boxes								
TP72181-1-1/4-REDⒸ	4 ¹¹ / ₁₆ " sq.	3"	-	Welded	Ground bump	60.0	8 - 1 ¹ / ₄ "	2 - 1 ¹ / ₂ ", 2 - 3 ³ / ₄ "
TP72181-1-1/2-REDⒸ	4 ¹¹ / ₁₆ " sq.	3"	-	Welded	Ground bump	60.0	4 - 1 ¹ / ₂ "	2 - 1 ¹ / ₂ ", 2 - 3 ³ / ₄ "
TP72181-DTA-REDⒸ	4 ¹¹ / ₁₆ " sq.	3 ³ / ₄ "	-	Welded	Ground screw	66.0	2 - 1 ¹ / ₂ " + 3 ³ / ₄ " C, 2 - 1" + 1 ¹ / ₄ " C, 2 - 1" + 1 ¹ / ₄ " + 1 ¹ / ₂ " + 2" C	2 - 1 ¹ / ₂ ", 2 - 3 ³ / ₄ " + 1" C
TP72181-DTAB-REDⒸ	4 ¹¹ / ₁₆ " sq.	3 ³ / ₄ "	AB	Welded	Ground screw	66.0	2 - 1 ¹ / ₂ " + 3 ³ / ₄ " C, 2 - 1" + 1 ¹ / ₄ " C, 2 - 1" + 1 ¹ / ₄ " + 1 ¹ / ₂ " + 2" C	2 - 1 ¹ / ₂ ", 2 - 3 ³ / ₄ " + 1" C

[ⓐ]UL Listed.

[ⓑ]Not UL Listed.

4¹¹/₁₆" SQUARE EXTENSION RINGS

1¹/₂" DEEP WITH CONDUIT KOs – 29.5 CUBIC INCH CAPACITY

2¹/₈" DEEP WITH CONDUIT KOs – 42.0 CUBIC INCH CAPACITY

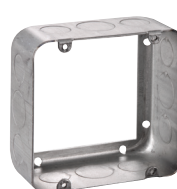
UL LISTED



TP550



TP564



TP837[ⓑ]



TP564RED

Cat. #	Description	Knockouts		Unit qty.	Wt. lbs. per 100
		Sides	Bottom		
1½" deep – 29.5 cubic inch capacity					
TP550ⓐ		8 - 1½", 4 - ¾"	-	25	66
2⅛" deep – 42.0 cubic inch capacity					
TP564ⓐ		8 - 1½", 4 - ¾"	-	25	84
TP564RED		8 - 1½", 4 - ¾"	-	25	84
TP565		6 - 1½", 6 - 1½" + ¾"	-	25	84
TP566		8 - 1"	-	25	84
Air Plenum					
TP837ⓐ	2⅛" deep	8 - 1½", 4 - ¾"	-	25	84

[ⓑ]For air plenum (no mounting holes) - not UL Listed. TP837 requires the use of TP852, purchased separately.

[ⓑ]CSA certified.

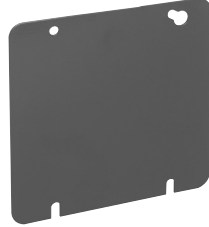
Steel square covers

4¹¹/₁₆" SQUARE COVERS – CUBIC INCH CAPACITY (SEE BELOW)

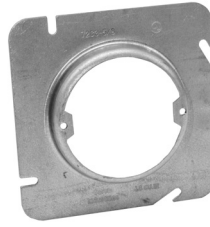
UL LISTED



TP568



TP568RED, TP568BLUE



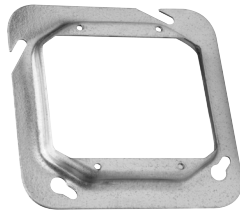
TP569, TP570, TP571,
TP573, TP575



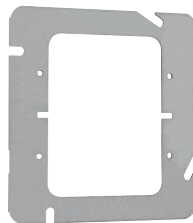
TP572



TP574 - TP582,
TP529, TP531



TP584, TP586, TP589,
TP593, TP541, TP543



TP584, TP586, TP589,
TP593, TP541, TP543



TP851^B



TP852^B

Cat. #	Description	Capacity cu. in.	Unit qty.	Wt. lbs. per 100
Flat and raised				
TP568 ^H	Flat blank	-	25	40
TP568RED	Flat blank, red	-	25	40
TP568BLUE ^C	Flat blank, blue	-	25	40
TP569 ^{C G}	1/2" raised, with ears 2 3/4"	3.5	25	25
TP570 ^C	5/8" raised, with ears 2 3/4"	4.8	25	31
TP571 ^{C G}	3/4" raised, with ears 2 3/4"	5.4	25	40
TP572 ^H	Flat, with 1/2" KO	-	25	40
TP573 ^{C G}	1" raised, with ears 2 3/4"	6.5	25	40
TP575 ^{C G}	1 1/4" raised, with ears 2 3/4"	9.5	25	45
Air plenum				
TP851 ^B	Flat blank gasketed with captive screws	-	50	42
TP852 ^B	Flat ring double gasketed	-	25	20
One device				
TP574 ^H	1/4" raised	1.8	25	32
TP576 ^{C H}	1/2" raised	3.5	50	31
TP579 ^H	5/8" raised	4.5	25	39
TP578 ^{C H}	3/4" raised	5.5	25	31
TP580 ^H	1" raised	6.8	25	46
TP582 ^H	1 1/4" raised	8.5	25	52
TP529 ^H	1 1/2" raised	11.3	25	64
TP531 ^H	2" raised	15.0	25	76
Two device				
TP590 ^C	Flat	-	50	19
TP583 ^{H G}	1/4" raised	3.0	25	26
TP584 ^H	1/2" raised	6.0	25	30
TP587 ^C	5/8" raised	7.3	25	25
TP586 ^H	3/4" raised	8.8	25	34
TP589 ^C	1" raised	11.5	25	38
TP593 ^C	1 1/4" raised	15.0	25	38
TP541 ^H	1 1/2" raised	18.8	25	63
TP543 ^{C H}	2" raised	24.5	25	79

^B For air plenum (no mounting holes) - not UL Listed.

^C cUL Listed.

^H CSA certified.

^G Not UL Listed.

Steel square covers

4¹¹/₁₆" SQUARE SURFACE COVERS – 9.0 CUBIC INCH CAPACITY

UL LISTED

CSA LISTED

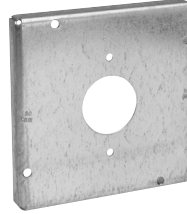
½" RAISED



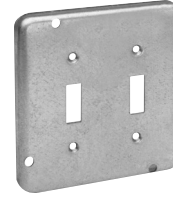
TP720



TP722



TP724, TP730,
TP736



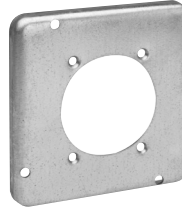
TP726



TP728



TP732



TP734



TP738



TP740

Cat. #	Description	Unit qty.	Wt. lbs. per 100
TP720	For one toggle switch	10	52
TP722	For one duplex receptacle	10	49
TP724	For one single receptacle 1 ¹³ / ₃₂ " (1.406") dia.	10	53
TP730	For one single receptacle 1 ²¹ / ₃₂ " (1.656") dia.	10	50
TP736	For one power outlet 1 ⁴¹ / ₆₄ " (1.734") dia.	10	51
TP726	For two toggle switches	10	52
TP728	For two duplex receptacles	10	44
TP732	For one power outlet 2 ³ / ₆₄ " (2.141") dia.	10	48
TP734	For one power outlet 2 ¹⁵ / ₃₂ " (2.469") dia.	10	45
TP738	For one ground fault interrupter	10	45
TP740	For one GFI receptacle and one toggle	25	45
TP741	For two GFI receptacles	10	43

Steel boxes

Steel square boxes

5" SQUARE LOW VOLTAGE OUTLET BOXES – 67.0 CUBIC INCH CAPACITY

UL LISTED

Applications:

- The data communications boxes are ideal for applications requiring the increased capacity including the installation of data communication, fire alarms and other applications requiring larger cubic capacity and knockouts.
- Suitable for healthcare, education, commercial and government facilities
- Ideal for audio, video, data and power applications
- For use with Rigid/IMC and EMT conduit

Certifications and compliances:

- UL Listed

Standard materials and finishes:

- Material - steel (.0625 (G60) galvanized)
- Finish - natural, blue or red painted



TP5SQ50100

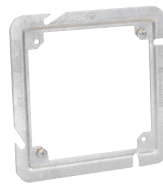
Cat. #	Box size	Box depth	Brkt.	Descrip.	Grounding method	Cap. cu. in.	Knockouts	
							Sides	Bottom
Standard unpainted boxes								
TP5SQ5075Ⓢ	5" sq.	2 ⁷ / ₈ "	-	Welded	-	67.0	12 - 1 ¹ / ₂ " + 3 ³ / ₄ " C	3 - 1 ¹ / ₂ ", 2 - 3 ³ / ₄ "
TP5SQ50100Ⓢ	5" sq.	2 ⁷ / ₈ "	-	Welded	-	67.0	4 - 1 ¹ / ₂ ", 8 - 1"	3 - 1 ¹ / ₂ ", 2 - 3 ³ / ₄ "
TP5SQ100125Ⓢ	5" sq.	2 ⁷ / ₈ "	-	Welded	-	67.0	4 - 1", 4 - 1 ¹ / ₄ "	3 - 1 ¹ / ₂ ", 2 - 3 ³ / ₄ "
Blue communications boxes								
TP5SQ5075-BLUEⓈ	5" sq.	2 ⁷ / ₈ "	-	Welded	-	67.0	12 - 1 ¹ / ₂ " + 3 ³ / ₄ " C	3 - 1 ¹ / ₂ ", 2 - 3 ³ / ₄ "
TP5SQ50100-BLUEⓈ	5" sq.	2 ⁷ / ₈ "	-	Welded	-	67.0	4 - 1 ¹ / ₂ ", 8 - 1"	3 - 1 ¹ / ₂ ", 2 - 3 ³ / ₄ "
TP5SQ100125-BLUEⓈ	5" sq.	2 ⁷ / ₈ "	-	Welded	-	67.0	4 - 1", 4 - 1 ¹ / ₄ "	3 - 1 ¹ / ₂ ", 2 - 3 ³ / ₄ "
Red fire signal boxes								
TP5SQ5075-REDⓈ	5" sq.	2 ⁷ / ₈ "	-	Welded	-	67.0	12 - 1 ¹ / ₂ " + 3 ³ / ₄ " C	3 - 1 ¹ / ₂ ", 2 - 3 ³ / ₄ "
TP5SQ50100-REDⓈ	5" sq.	2 ⁷ / ₈ "	-	Welded	-	67.0	4 - 1 ¹ / ₂ ", 8 - 1"	3 - 1 ¹ / ₂ ", 2 - 3 ³ / ₄ "
TP5SQ100125-REDⓈ	5" sq.	2 ⁷ / ₈ "	-	Welded	-	67.0	4 - 1", 4 - 1 ¹ / ₄ "	3 - 1 ¹ / ₂ ", 2 - 3 ³ / ₄ "

5" SQUARE COVERS AND ADAPTERS

UL LISTED



TP5BC



TP5CP

Cat. #	Box size	Box depth	Brkt.	Descrip.	Grounding method	Cap. cu. in.	Knockouts	
							Sides	Bottom
Standard unpainted boxes								
TP5BC	5" sq.	Blank	-	Cover	-	-	-	-
TP5CP	5" sq.		-	4" Sq. adapter	-	-	-	-
Blue communications boxes								
TP5BC-BLUE	5" sq.	Blank	-	Cover	-	-	-	-
TP5CP-BLUE	5" sq.	-	-	4" Sq. adapter	-	-	-	-
Red fire signal boxes								
TP5BC-RED	5" sq.	Blank	-	Cover	-	-	-	-
TP5CP-RED	5" sq.	-	-	4" Sq. adapter	-	-	-	-

[Ⓢ]cUL Listed.

[Ⓢ]Not UL Listed.

Steel utility boxes & covers

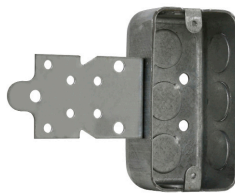
UTILITY BOXES – CUBIC INCH CAPACITY (SEE BELOW)

4" LONG x 2 1/8" WIDE

UL LISTED



TP588, TP647



TP591



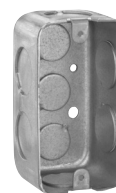
TP592



TP600, TP602



TP598, TP605



TP594, TP596



TP604, TP606

Cat. #	Bracket	Knockouts		Unit qty.	Wt. lbs. per 100
		Sides	Bottom		
1¼" deep – 8.5 cubic inch capacity					
TP647	-	8 - ½"	3 - ½"	50	40
1½" deep – 10.3 cubic inch capacity					
TP588	-	8 - ½"	3 - ½"	50	42
TP588G ⑤	-	8 - ½"	3 - ½"	50	42
TP591	"F", set ¼"	5 - ½"	3 - ½"	50	51
1½" deep extension rings – 9.0 cubic inch capacity					
TP592 ⑥	-	8 - ½"	-	50	31
1⅞" deep – 13.0 cubic inch capacity					
TP594	-	8 - ½"	3 - ½"	50	50
TP594G ⑤	-	8 - ½"	3 - ½"	50	50
TP596	-	6 - ¾"	3 - ½"	50	50
TP596G ⑤	-	6 - ¾"	3 - ½"	50	50
TP598	"S", Set ½"	5 - ½"	3 - ½"	50	60
1⅞" deep extension rings – 13.0 cubic inch capacity					
TP600 ⑥	-	8 - ½"	-	50	44
TP602	-	6 - ¾"	-	50	41
2⅞" deep – 14.5 cubic inch capacity					
TP604	-	8 - ½"	3 - ½"	50	56
TP604G ⑤	-	8 - ½"	3 - ½"	50	56
TP606	-	6 - ¾"	3 - ½"	50	56
TP606G ⑤	-	6 - ¾"	3 - ½"	50	56
TP605	"S", Set ½"	5 - ½"	3 - ½"	50	66

^GcUL Listed.

^FCSA certified. G indicates ground screw installed.

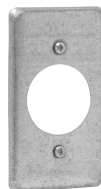
UTILITY BOX COVERS

UL LISTED

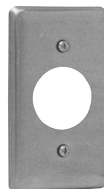
CSA LISTED



TP608



TP610



TP612



TP613



TP614



TP616



TP618

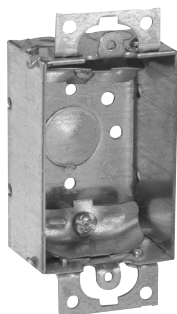
Cat. #	Description	Unit qty.	Wt. lbs. per 100
TP608	Blank	100	10
TP610	For one single receptacle 1 9/32" (1.594") dia.	100	9
TP612	Single receptacle, 1 13/32" (1.719") dia.	100	9
TP613	For GFCI device	100	7
TP614	1/2" KO	100	10
TP616	Duplex receptacle	100	8
TP618	One toggle switch	100	10

Steel switch boxes

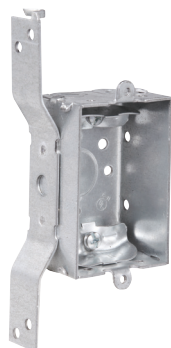
1½" DEEP – NON-GANGABLE – 7.5 CUBIC INCH CAPACITY

2" WIDE x 3" LONG

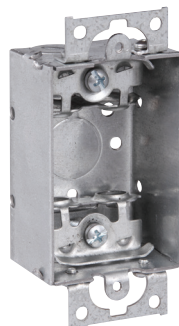
UL LISTED



TP100



TP104



TP106



TP114

Cat. #	Bracket	Ears	Knockouts			Unit qty.	Wt. lbs. per 100
			Each end	Each side	Bottom		
For non-metallic cable – clamps in each end							
TP100	-	Yes	2 - cable	-	1 - 1/2"	50	43
TP100G ⑤	-	Yes	2 - cable	-	1 - 1/2"	50	43
TP104	"S", Set 1/2"	-	2 - cable	-	1 - 1/2"	50	50
For armored & metal-clad (MCI) cable – clamps in each end							
TP106 ⑥	-	Yes	2 - cable	-	1 - 1/2"	50	44
For conduit – no clamps, flush device							
TP114	-	Yes	1 - 1/2"	-	1 - 1/2"	50	39

^A UL approved for use with aluminum interlocking grounding metal-clad cable, Type MCIA (Southwire MCAP™).

MCAP™ is a registered trademark of Southwire Company.

^F CSA certified. G indicates ground screw installed.

Steel switch boxes

2" DEEP – GANGABLE – 10.0 CUBIC INCH CAPACITY

2" WIDE x 3" LONG

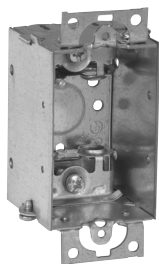
UL LISTED



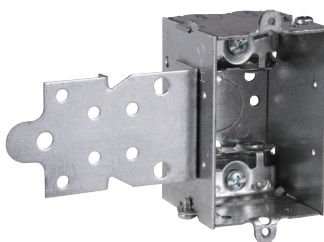
TP116



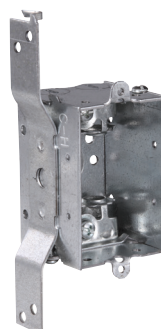
TP118



TP120



TP123



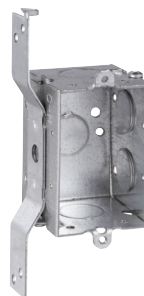
TP124



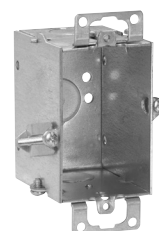
TP126



TP130



TP132



TP131 Hold-tite

Steel boxes

Cat. #	Bracket	Ears	Knockouts			Unit qty.	Wt. lbs. per 100
			Each end	Each side	Bottom		
For non-metallic cable – clamps in each end							
TP116	-	Yes	2 - cable	-	1 - 1/2"	50	53
TP118	"S", set 5/8"	-	2 - cable	-	1 - 1/2"	50	60
For armored & metal-clad (MCI) cable – clamps in each end							
TP120Ⓐ	-	Yes	2 - cable	-	1 - 1/2"	50	54
TP123Ⓐ	"F", set 1/2"	-	2 - cable	-	1 - 1/2"	50	63
TP124Ⓐ	"S", set 5/8"	-	2 - cable	-	1 - 1/2"	50	61
For conduit – no clamps, flush device							
TP126	-	-	1 - 1/2"	2 - 1/2"	1 - 1/2"	50	47
TP130	-	Yes	1 - 1/2"	2 - 1/2"	1 - 1/2"	50	48
TP130GⓉ	-	Yes	1 - 1/2"	2 - 1/2"	1 - 1/2"	50	48
TP132	"S", set 5/8"	-	1 - 1/2"	2 - 1/2", 1 Side	1 - 1/2"	50	58
TP132GⓉ	"S", set 5/8"	-	1 - 1/2"	2 - 1/2", 1 side	1 - 1/2"	50	58
TP131	Hold-tite	Yes	1 - 1/2" - T	-	1 - 1/2"	50	52
TP131GⓉ	Hold-tite	Yes	1 - 1/2" - T	-	1 - 1/2"	50	52

^AUL approved for use with aluminum interlocking grounding metal-clad cable, Type MCIA (Southwire MCAP™).

MCAP™ is a registered trademark of Southwire Company.

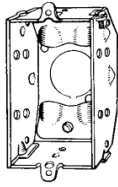
^FCSA certified. G indicates ground screw installed.

Steel switch boxes

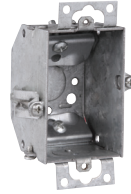
2 1/4" DEEP – GANGABLE – BEVELED CORNERS – 10.5 CUBIC INCH CAPACITY

2" WIDE x 3" LONG

UL LISTED



TP134



TP137 Hold-tite



TP138

Cat. #	Description	Ears	Bumps	Knockouts			Unit qty.	Wt. lbs. per 100
				Each end	Each side	Bottom		
Clamp screws through beveled corners								
TP134	Gangable	-	Yes	2 - cable	-	1 - 1/2"	50	51
TP137	Gangable	Yes	-	2 - cable	-	1 - 1/2"	50	57
TP137G ^F	Gangable	Yes	-	2 - Cable	-	1 - 1/2"	50	57
TP138	Gangable	Yes	-	2 - cable	-	1 - 1/2"	50	55
TP138G ^F	Gangable	Yes	-	2 - Cable	-	1 - 1/2"	50	55

^F CSA certified. G indicates ground screw installed.

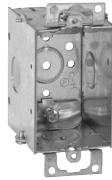
2 1/2" DEEP – GANGABLE – 12.5 CUBIC INCH CAPACITY

2" WIDE x 3" LONG

UL LISTED



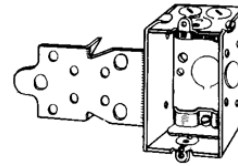
TP158



TP162



TP163



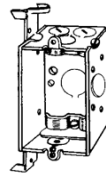
TP164, TP168



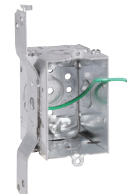
TP170



TP161



TP172



TP174



TP171

Cat. #	Bracket	Ears	Ground pigtail	Leveling bumps	Knockouts			Unit qty.	Wt. lbs. per 100
					Each end	Each side	Bottom		
For non-metallic cable – clamps in each end									
TP158	-	-	-	Yes	2 - cable, 1 - 1/2"	-	1 - 1/2"	50	59
TP115 ^G	-	Yes	Yes	-	2 - cable	1 - 1/2"	1 - 1/2"	50	63
TP161	Snap-in	Yes	-	-	2 - cable	1 - 1/2"	-	50	73
TP161G ^F	Snap-in	Yes	-	-	2 - cable	1 - 1/2"	-	50	73
TP162	-	Yes	-	-	2 - cable	1 - 1/2"	1 - 1/2"	50	62
TP162G ^F	-	Yes	-	-	2 - cable	1 - 1/2"	1 - 1/2"	50	62
TP163	Hold-tite	Yes	-	-	2 - cable	-	1 - 1/2"	50	65
TP163G ^F	Hold-tite	Yes	-	-	2 - cable	-	1 - 1/2"	50	65
TP164	"F", set 1/2"	-	-	-	2 - cable, 1 - 1/2"	1 - 1/2"	1 - 1/2"	50	71
TP164G ^F	"F", set 1/2"	-	-	-	2 - cable, 1 - 1/2"	1 - 1/2"	1 - 1/2"	50	71
TP168	"F", set 1/4"	-	-	-	2 - cable, 1 - 1/2"	1 - 1/2"	1 - 1/2"	50	71
TP168G ^F	"F", set 1/4"	-	-	-	2 - cable, 1 - 1/2"	1 - 1/2"	1 - 1/2"	50	71
TP170	"S", set 3/8"	-	-	-	2 - cable, 1 - 1/2"	1 - 1/2"	1 - 1/2"	50	69
TP172	"D", set 5/8"	-	-	-	2 - cable, 1 - 1/2"	1 - 1/2"	1 - 1/2"	50	70
TP174	"D", set 5/8"	-	Yes	-	2 - cable, 1 - 1/2"	1 - 1/2"	1 - 1/2"	50	71
TP171	"VP", set 1/2"	-	-	-	2 - cable, 1 - 1/2"	1 - 1/2"	1 - 1/2"	50	73
TP171G ^F	"VP", set 1/2"	-	-	-	2 - cable, 1 - 1/2"	1 - 1/2"	1 - 1/2"	50	73

^G Not UL Listed.

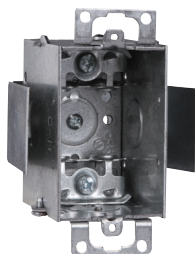
^F CSA certified. G indicates ground screw installed.

Steel switch boxes

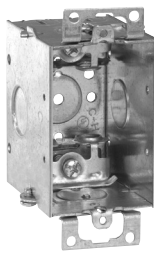
2 1/2" DEEP – GANGABLE – 12.5 CUBIC INCH CAPACITY

2" WIDE x 3" LONG FOR ARMORED & METAL-CLAD (MCI) CABLE – CLAMPS IN EACH END

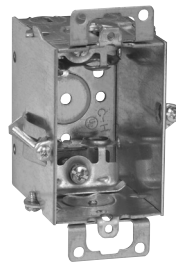
UL LISTED



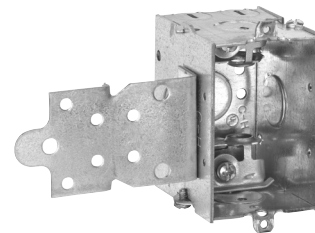
TP177



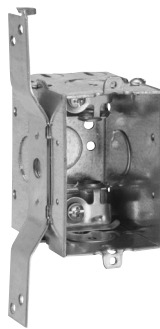
TP178



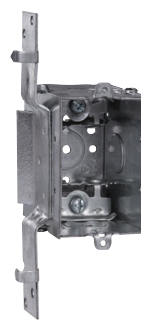
TP179 Hold-Tite



TP180



TP184



TP185

Cat. #	Bracket	Ears	Knockouts			Unit qty.	Wt. lbs. per 100
			Each end	Each side	Bottom		
TP177 ^A	Snap-in	Yes	2 - cable	1 - 1/2"	-	50	74
TP178 ^A	-	Yes	2 - cable	1 - 1/2"	1 - 1/2"	50	63
TP179 ^A	Hold-tite	Yes	2 - cable	-	1 - 1/2"	50	66
TP180 ^A	"F", set 1/2"	-	2 - cable, 1 - 1/2"	1 - 1/2"	1 - 1/2"	50	72
TP180G ^A	"F", set 1/2"	-	2 - cable, 1 - 1/2"	1 - 1/2"	1 - 1/2"	50	72
TP184 ^A	"S", set 5/8"	-	2 - cable, 1 - 1/2"	1 - 1/2"	1 - 1/2"	50	70
TP185 ^A	"VP", set 1/2"	-	2 - cable, 1 - 1/2"	1 - 1/2"	1 - 1/2"	50	74
TP185G ^A	"VP", set 1/2"	-	2 - cable, 1 - 1/2"	1 - 1/2"	1 - 1/2"	50	74

^A UL approved for use with aluminum interlocking grounding metal-clad cable, Type MCIA (Southwire MCAP[®]).

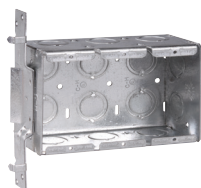
MCAP[®] is a registered trademark of Southwire Company.

^F CSA certified. G indicates ground screw installed.

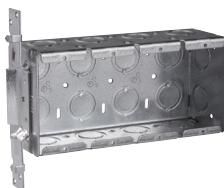
GANG BOXES SET BACK 1/2"

2 1/2" DEEP – 3 3/4" HIGH – 1/2" & 3/4" CONCENTRIC KOs

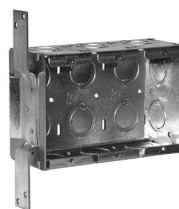
UL LISTED



TP632



TP633



TP637



TP638

Cat. #	Gang	Bracket	Width	Knockouts			Capacity cu. in.	Unit qty.	Wt. lbs. per 100
				Each end	Each side	Bottom			
TP632	3	VP	5 5/16"	2	3	6	46.5	5	143
TP633	4	VP	7 3/8"	2	4	8	62.0	5	179
TP637	3	VS	5 5/16"	2	3	6	46.5	5	143
TP638	4	VS	7 3/8"	2	4	8	62.0	5	179

Steel switch boxes

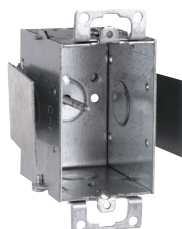
2 1/2" DEEP – GANGABLE – 12.5 CUBIC INCH CAPACITY

**2" WIDE x 3" LONG
FOR CONDUIT – NO CLAMPS**

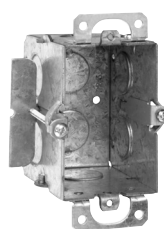
UL LISTED



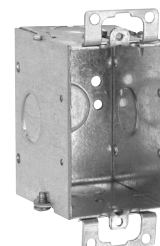
TP214



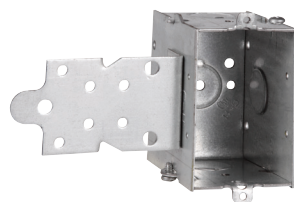
TP216



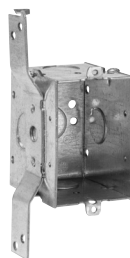
TP217



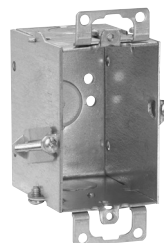
TP218



TP220



TP222



TP224

Cat. #	Bracket	Ears	Leveling Bumps	Knockouts			Unit qty.	Wt. lbs. per 100
				Each end	Each side	Bottom		
TP214	-	-	Yes	1 - 1/2"	-	1 - 1/2"	50	55
TP214G [Ⓟ]	-	-	Yes	1 - 1/2"	-	1 - 1/2"	50	55
TP216	Snap-in	Yes	-	1 - 1/2"	1 - 1/2"	-	50	69
TP217	-	Yes	-	1 - 1/2"	-	1 - 1/2"	50	64
TP218	-	Yes	-	1 - 1/2"	1 - 1/2"	1 - 1/2"	50	58
TP218G [Ⓟ]	-	Yes	-	1 - 1/2"	1 - 1/2"	1 - 1/2"	50	58
TP220	"F", set 1/2"	-	-	1 - 1/2"	1 - 1/2", 1 side	1 - 1/2"	50	66
TP222	"S", set 5/8"	-	-	1 - 1/2"	1 - 1/2", 1 side	1 - 1/2"	50	65
TP222G [Ⓟ]	"S", set 5/8"	-	-	1 - 1/2"	1 - 1/2", 1 side	1 - 1/2"	50	65
TP224	Hold-tite	Yes	-	1 - 1/2"	-	1 - 1/2"	50	61

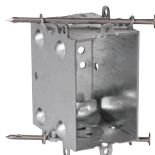
[Ⓟ] CSA certified. G indicates ground screw installed.

Steel switch boxes

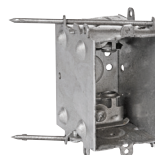
2 1/2" DEEP SWITCH BOXES – "INSTANT ON" – 12.5 CUBIC INCH CAPACITY

2" WIDE x 3" LONG

WITH BUMPS – CLAMPS IN EACH END (BUMPS LEVEL THE BOX AGAINST THE SIDE OF STUD, TOP TO BOTTOM, FRONT TO BACK)



TP210



TP213

Cat. #	Clamps	Nails	Knockouts			Unit qty.	Wt. lbs. per 100
			Each end	Each side	Bottom		
TP210	NM cable	Angle	2 - cable, 1 - 1/2"	-	1 - 1/2"	50	66
TP213	Armored cable	Angle	2 - cable, 1 - 1/2"	-	1 - 1/2"	50	66

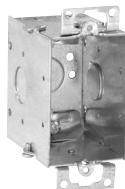
2 3/4" DEEP – GANGABLE – 14.0 CUBIC INCH CAPACITY

2" WIDE x 3" LONG

UL LISTED



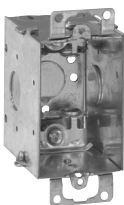
TP660



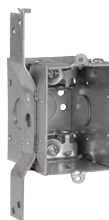
TP662



TP664



TP668



TP670

Cat. #	Bracket	Ears	Knockouts			Unit qty.	Wt. lbs. per 100
			Each end	Each side	Bottom		
For non-metallic cable – clamps in each end							
TP660	-	-	2 - cable	1 - 1/2"	1 - 1/2"	50	62
TP662	-	Yes	2 - cable	1 - 1/2"	1 - 1/2"	50	67
TP664	"S", set 5/8"	-	2 - cable	1 - 1/2"	1 - 1/2"	50	70
For armored & metal-clad (MCI) cable – clamps in each end							
TP668	-	Yes	2 - cable	1 - 1/2"	1 - 1/2"	50	68
TP670	"S", set 5/8"	-	2 - cable	1 - 1/2"	1 - 1/2"	50	71

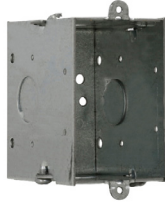
^AUL approved for use with aluminum interlocking grounding metal-clad cable, Type MCIA (Southwire MCAP™). MCAP™ is a registered trademark of Southwire Company.

Steel switch boxes

2³/₄" DEEP – GANGABLE – 14.0 CUBIC INCH CAPACITY

2" WIDE x 3" LONG
FOR CONDUIT – NO CLAMPS

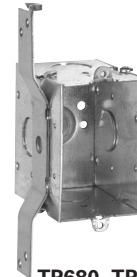
UL LISTED



TP672, TP674



(TP676 – 1 screw ear),
(TP678 – 2 screw ears)



TP680, TP677

Cat. #	Bracket	Ears	Knockouts			Unit qty.	Wt. lbs. per 100
			Each end	Each side	Bottom		
TP672	-	-	1 - 1/2"	1 - 1/2"	1 - 1/2"	50	59
TP674	-	-	1 - 3/4"	1 - 3/4"	1 - 1/2"	50	59
TP676	-	Yes	1 - 1/2"	1 - 1/2"	1 - 1/2"	50	61
TP678	-	Yes	1 - 3/4"	1 - 3/4"	1 - 1/2"	50	61
TP680	"S", set 5/8"	-	1 - 1/2"	1 - 1/2", 1 Side	1 - 1/2"	50	70
TP677	"S", set 5/8"	-	1 - 3/4"	1 - 3/4", 1 Side	1 - 1/2"	50	70

3¹/₂" DEEP – GANGABLE – 18.0 CUBIC INCH CAPACITY

2" WIDE x 3" LONG
FOR NON-METALLIC CABLE – CLAMPS IN EACH END

UL LISTED



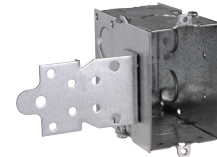
TP236



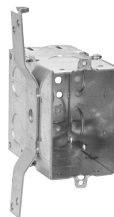
TP238



TP239



TP240



TP242



TP243

Cat. #	Bracket	Ground pigtail	Ears	Knockouts			Unit qty.	Wt. lbs. per 100
				Each end	Each side	Bottom		
TP236	-	-	-	2 - cable, 1 - 1/2"	2 - 1/2"	1 - 1/2"	25	78
TP238	-	-	Yes	2 - cable, 1 - 1/2"	2 - 1/2"	1 - 1/2"	25	80
TP238G [Ⓡ]	-	-	Yes	2 - cable, 1 - 1/2"	2 - 1/2"	1 - 1/2"	25	80
TP239	-	Yes	Yes	2 - cable, 1 - 1/2"	2 - 1/2"	1 - 1/2"	25	81
TP240	"F", set 1/2"	-	-	2 - cable, 1 - 1/2"	2 - 1/2"	1 - 1/2"	25	88
TP242	"S", set 7/8"	-	-	2 - cable, 1 - 1/2"	2 - 1/2"	1 - 1/2"	25	87
TP242G [Ⓡ]	"S", set 7/8"	-	-	2 - cable, 1 - 1/2"	2 - 1/2"	1 - 1/2"	25	87
TP243	"S", set 7/8"	Yes	-	2 - cable, 1 - 1/2"	2 - 1/2"	1 - 1/2"	25	88

[Ⓡ] CSA certified. G indicates ground screw installed.

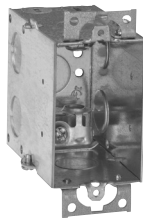
Steel switch boxes

3 1/2" DEEP – GANGABLE – 18.0 CUBIC INCH CAPACITY

2" WIDE x 3" LONG

FOR ARMORED & METAL-CLAD (MCI) CABLE – CLAMPS IN EACH END

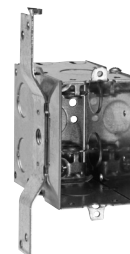
UL LISTED



TP244



TP249



TP246

Cat. #	Bracket	Ground pigtail	Ears	Knockouts			Unit qty.	Wt. lbs. per 100
				Each end	Each side	Bottom		
TP244 ^A	-	-	Yes	2 - cable, 1 - 1/2"	2 - 1/2"	1 - 1/2"	25	81
TP249 ^A	-	Yes	Yes	2 - cable, 1 - 1/2"	2 - 1/2"	1 - 1/2"	25	82
TP246 ^A	"S", set 1/8"	-	-	2 - cable, 1 - 1/2"	2 - 1/2"	1 - 1/2"	25	88

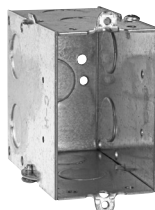
^AUL approved for use with aluminum interlocking grounding metal-clad cable, Type MCIA (Southwire MCAP®). MCAP® is a registered trademark of Southwire Company.

3 1/2" DEEP – GANGABLE – 18.0 CUBIC INCH CAPACITY

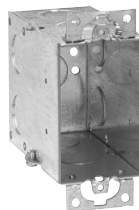
2" WIDE x 3" LONG

FOR CONDUIT – NO CLAMPS

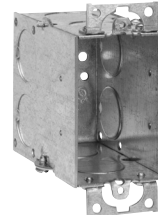
UL LISTED



TP248, TP250



TP252

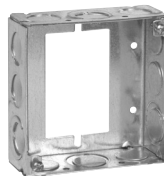


TP254

Cat. #	Bracket	Ears	Knockouts			Unit qty.	Wt. lbs. per 100
			Each end	Each side	Bottom		
TP248	-	-	2 - 1/2"	2 - 1/2"	1 - 1/2"	25	74
TP250	-	-	2 - 3/4"	2 - 3/4"	1 - 1/2"	25	74
TP252	-	Yes	2 - 1/2"	2 - 1/2"	1 - 1/2"	25	76
TP254	-	Yes	2 - 3/4"	2 - 3/4"	1 - 1/2"	25	76
TP254G ^F	-	Yes	2 - 3/4"	2 - 3/4"	1 - 1/2"	25	76

^FCSA certified. G indicates ground screw installed.

1 1/2" DEEP SWITCH & MASONRY BOX EXTENSION RING



TP422^B

TP422 [®]		Unit qty.	Wt. lbs. per 100
Cat. #	Knockouts		
	Sides	Bottom	
1½" deep switch & masonry box extension ring			
TP422 [®] H	8 - ½" 4 - ½" + ¾" E	-	50

^DFor use as extension with switch box, not four square box.

^HCSA certified.

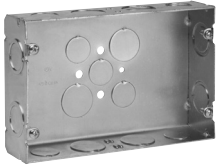
Steel gang boxes

GANG BOXES

1 $\frac{5}{8}$ " DEEP x 4 $\frac{1}{2}$ " HIGH

$\frac{1}{2}$ " & $\frac{3}{4}$ " KOs

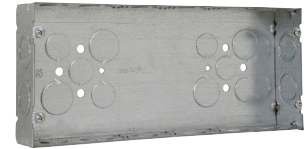
UL LISTED



TP629



TP630



TP630



TP640



TP641

Cat. #	Gang	Cubic inches	Width	Knockouts			Unit qty.	Wt. lbs. per 100
				Each end	Each side	Bottom		
TP629	2	45	6 $\frac{13}{16}$ "	1 - $\frac{1}{2}$ ", 1 - $\frac{3}{4}$ "	2 - $\frac{1}{2}$ ", 2 - $\frac{3}{4}$ "	3 - $\frac{1}{2}$ ", 2 - $\frac{3}{4}$ "	5	45
TP630	3	58	8 $\frac{5}{8}$ "	1 - $\frac{1}{2}$ ", 1 - $\frac{3}{4}$ "	3 - $\frac{1}{2}$ ", 2 - $\frac{3}{4}$ "	6 - $\frac{1}{2}$ ", 4 - $\frac{3}{4}$ "	5	58
TP631	4	70	10 $\frac{7}{16}$ "	1 - $\frac{1}{2}$ ", 1 - $\frac{3}{4}$ "	3 - $\frac{1}{2}$ ", 3 - $\frac{3}{4}$ "	6 - $\frac{1}{2}$ ", 4 - $\frac{3}{4}$ "	5	70
TP640	5	85	12 $\frac{1}{4}$ "	1 - $\frac{1}{2}$ ", 1 - $\frac{3}{4}$ "	4 - $\frac{1}{2}$ ", 3 - $\frac{3}{4}$ "	6 - $\frac{1}{2}$ ", 4 - $\frac{3}{4}$ "	1	85
TP641	6	95	14 $\frac{1}{16}$ "	1 - $\frac{1}{2}$ ", 1 - $\frac{3}{4}$ "	4 - $\frac{1}{2}$ ", 4 - $\frac{3}{4}$ "	6 - $\frac{1}{2}$ ", 4 - $\frac{3}{4}$ "	1	95

GANG BOXES

2 $\frac{1}{2}$ " DEEP x 4 $\frac{1}{2}$ " HIGH

$\frac{3}{4}$ " & 1" KOs

UL LISTED



TP871



TP871



TP873

Cat. #	Gang	Cubic inches	Width	Knockouts			Unit qty.	Wt. lbs. per 100
				Each end	Each side	Bottom		
TP870	2	71	6 $\frac{13}{16}$ "	1 - $\frac{3}{4}$ ", 1 - 1"	2 - $\frac{3}{4}$ ", 1 - 1"	3 - $\frac{1}{2}$ ", 2 - $\frac{3}{4}$ "	10	147
TP871	3	90	8 $\frac{5}{8}$ "	1 - $\frac{3}{4}$ ", 1 - 1"	4 - $\frac{3}{4}$ ", 1 - 1"	6 - $\frac{1}{2}$ ", 4 - $\frac{3}{4}$ "	10	183
TP872	4	110	10 $\frac{7}{16}$ "	1 - $\frac{3}{4}$ ", 1 - 1"	2 - $\frac{3}{4}$ ", 2 - 1"	6 - $\frac{1}{2}$ ", 4 - $\frac{3}{4}$ "	5	216
TP873	5	132	12 $\frac{1}{4}$ "	1 - $\frac{3}{4}$ ", 1 - 1"	3 - $\frac{3}{4}$ ", 2 - 1"	6 - $\frac{1}{2}$ ", 4 - $\frac{3}{4}$ "	5	263
TP874	6	150	14 $\frac{1}{16}$ "	1 - $\frac{3}{4}$ ", 1 - 1"	3 - $\frac{3}{4}$ ", 3 - 1"	6 - $\frac{1}{2}$ ", 4 - $\frac{3}{4}$ "	5	282

GANG BOX PARTITIONS



TP876



TP877

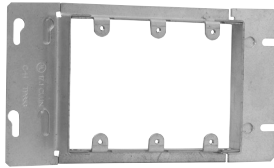
Cat. #	Description	Unit qty.	Wt. lbs. per 100
TP876	For 1 $\frac{5}{8}$ " deep box	25	19
TP877	For 2 $\frac{1}{2}$ " deep box	50	24

Steel gang box covers

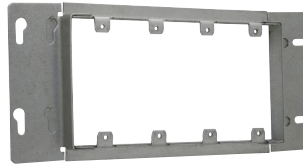
GANG BOX COVERS

RAISED $1\frac{3}{16}$ " FOR PLASTER

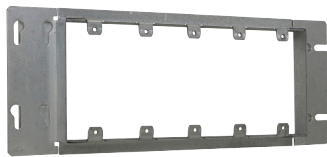
UL LISTED



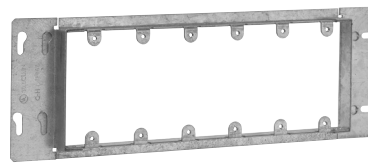
TP653



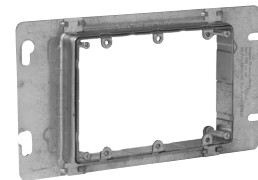
TP655



TP661



TP667



AMR3

Cat. #	Gang	Length	Capacity cu. in.	Unit qty.	Wt. lbs. per 100
TP657	2	7"	8.5	5	53
TP653	3	8 $\frac{13}{16}$ "	13.5	5	60
AMR3 ^H	3	$\frac{3}{4}$ " - 1 $\frac{1}{2}$ " raised adjustable	10.4	25	78
TP655	4	10 $\frac{5}{8}$ "	18.3	5	66
TP661	5	12 $\frac{1}{16}$ "	23.0	5	75
TP667 ^C	6	14 $\frac{1}{4}$ "	30.5	5	75

^CcUL Listed.
^HCSA certified.

GANG BOX COVERS, FLAT, BLANK

UL LISTED



TP803



TP806

Cat. #	Gang	Length	Unit qty.	Wt. lbs. per 100
TP802 ^C	2	7"	5	44
TP803 ^C	3	8 $\frac{13}{16}$ "	5	75
TP804 ^C	4	10 $\frac{5}{8}$ "	5	88
TP805 ^C	5	12 $\frac{1}{16}$ "	1	94
TP806	6	14 $\frac{1}{4}$ "	1	132

^CcUL Listed.

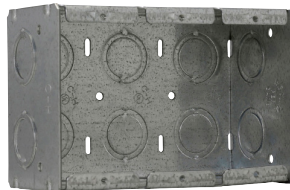
Steel masonry boxes

MASONRY BOXES

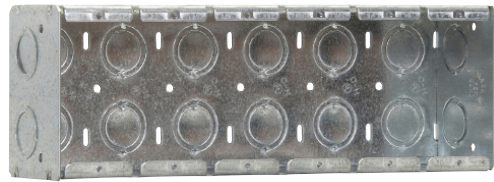
2 1/2" DEEP x 3 3/4" HIGH
1/2" & 3/4" CONCENTRIC KOs
UL LISTED



TP682



TP684

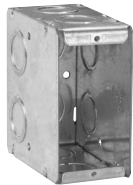


TP687

Cat. #	Gang	Width	Knockouts			Capacity cu. in.	Unit qty.	Wt. lbs. per 100
			Each end	Each side	Bottom			
TP682	1	1 15/16"	1	2	2	15.5	20	70
TP683	2	3 3/4"	2	2	4	31.0	10	103
TP684	3	5 3/16"	3	2	6	46.5	5	129
TP685	4	7 3/8"	4	2	8	62.0	5	165
TP686	5	9 3/16"	5	2	10	77.5	5	189
TP687	6	11"	6	2	12	93.0	1	230

MASONRY BOXES

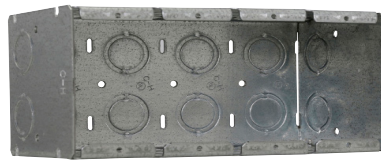
3 1/2" DEEP x 3 3/4" HIGH
1/2" & 3/4" CONCENTRIC KOs
UL LISTED



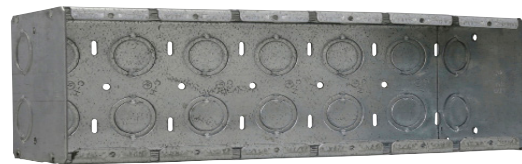
TP690



TP691



TP693



TP695

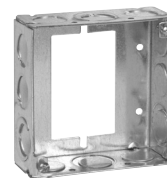
Cat. #	Gang	Width	Knockouts			Capacity cu. in.	Unit qty.	Wt. lbs. per 100
			Each end	Each side	Bottom			
TP690	1	1 15/16"	2	2	2	22.0	20	84
TP691	2	3 3/4"	4	2	4	44.0	10	120
TP692	3	5 3/16"	6	2	6	66.5	10	155
TP693	4	7 3/8"	8	2	8	88.0	5	207
TP694	5	9 3/16"	10	2	10	110.0	5	235
TP695	6	11"	12	2	12	132.0	1	287

Steel boxes

MASONRY BOX PARTITIONS & EXTENSION RING



TP820



TP422①

Cat. #	Description	Unit qty.	Wt. lbs. per 100	
Masonry box partitions				
TP820	Non-metallic partition for 2½" deep masonry boxes	25	3	
TP821	Non-metallic partition for 3½" deep masonry boxes	25	4	
Knockouts				
Cat. #	Sides	Bottom	Unit qty.	Wt. lbs. per 100
1½" deep switch & masonry box extension ring				
TP422	8 - ½" 4 - ½" + ¾" E	-	50	50

① For use as extension with switch box, not four square box.

Steel masonry boxes

GANGABLE MASONRY BOXES

UL LISTED

Features:

- The gangable feature allows the option of creating a multiple gang box from a single gang box by simply removing the combo head screw holding the side with a #2 bit and connecting the two (or more) boxes together re-using the screws
- Non-metallic partitions (ordered separately) install quickly and easily without tools in multi-gang boxes and are used to separate power and control circuits within the same box, as required by the National Electrical Code®



Cat. #	Width	Knockouts			Capacity cu. in.	Unit qty.	Wt. lbs. per 100
		Each end	Each side	Bottom			
2½" deep x 3¾" high, ½" & ¾" concentric KOs							
TP671	1 ¹⁵ / ₁₆ "	2	2	2	15.5	20	63
3½" deep x 3¾" high, ½" & ¾" concentric KOs							
TP675	1 ¹⁵ / ₁₆ "	2	4	2	22.0	20	82

GANGABLE MASONRY BOX PARTITIONS



TP654

Cat. #	Description	Unit qty.	Wt. lbs. per 100
TP654	Non-metallic partition for 2 1/2" deep gangable masonry boxes	25	4
TP656	Non-metallic partition for 3 1/2" deep gangable masonry boxes	25	6

Steel boxes

Steel octagon boxes & ceiling pans

3 1/4" ROUND CEILING PANS – 4.0 CUBIC INCH CAPACITY

1/2" DEEP

CLAMPS IN BOTTOM

UL LISTED



TP266

Cat. #	Knockouts		Fan rated (weight lbs.)	Fixture rated (weight lbs.)	Unit qty.	Wt. lbs. per 100
	Cable	Conduit				
TP266	4 - cable	1 - 1/2"	No	50	50	30

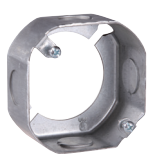
3 1/2" OCTAGON OUTLET BOXES

1 1/2" DEEP

UL LISTED



TP256



TP258



TP259



TP260



TP264

Cat. #	Description	Cubic inches	Knockouts		Fan rated (weight lbs.)	Fixture rated (weight lbs.)	Unit qty.	Wt. lbs. per 100
			Sides	Bottom				
For conduit – no clamps								
TP256	-	11.5	4 - 1/2"	1 - 1/2"	No	50	50	41
TP258	Extension ring	9.0	4 - 1/2"	-	No	50	50	31
For non-metallic cable with clamps								
TP259	"S" bracket, set 1/2"	9.0	4 - cable, 1 - 1/2"	1 - 1/2"	No	50	50	53
TP260	-	11.5	4 - cable, 2 - 1/2"	1 - 1/2"	No	50	50	44
TP264	Two screw ears	9.0	4 - cable, 2 - 1/2"	1 - 1/2"	No	50	50	47

3 1/2" ROUND CEILING COVERS

UL LISTED



TP270



TP272

Cat. #	Knockouts		Unit qty.	Wt. lbs. per 100
	Cable	Conduit		
TP270	Flat blank		100	18
TP272	Flat, 1/2" KO in center		100	18

Steel octagon boxes & ceiling pans

4" ROUND CEILING PANS

UL LISTED



TP261



TP267



TP269



TP301

Cat. #	Description	Depth	Cubic inches	Knockouts		Fan rated (weight lbs.)	Fixture rated (weight lbs.)	Unit qty.	Wt. lbs. per 100
				Sides	Bottom				
TP261	External clamp and mounting screws (polybagged)	5/8"	8.0	-	2 - 1/2"	35	50	20	50
TP267	KOs and clamps	1/2"	6.0	-	4 - cable, 3 - 1/2"	No	50	50	39
TP269	KOs only	1/2"	6.0	-	5 - 1/2"	No	50	50	35
TP269G ^F	KOs Only	1/2"	6.0	-	5 - 1/2"	No	50	50	35
TP301 ^G	NM snap-in connector, mtg. screws, protective cover	1/2"	6.0	-	3 - 1/2"	70	90	20	51

^F CSA certified. G indicates ground screw installed.
^G TP301 fan is supported independent of outlet box.

4" OCTAGON OUTLET BOXES – 15.5 CUBIC INCH CAPACITY

1 1/2" DEEP
FOR CONDUIT – NO CLAMPS

UL LISTED



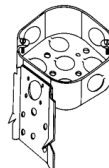
TP274, TP278,
TP834G



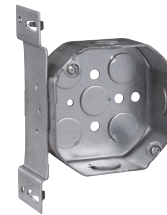
TP276



TP273



TP280



TP282



TP284, TP286

Cat. #	Description	Knockouts		Fan rated (weight lbs.)	Fixture rated (weight lbs.)	Unit qty.	Wt. lbs. per 100
		Sides	Bottom				
TP274	-	4 - 1/2"	5 - 1/2"	No	50	50	50
TP274G ^F	-	4 - 1/2"	5 - 1/2"	No	50	50	50
TP274RED ^G	-	4 - 1/2"	5 - 1/2"	No	50	50	50
TP273	Blank bottom	4 - 1/2"	-	No	50	50	51
TP276	-	4 - 3/4"	3 - 1/2", 2 - 3/4"	No	50	50	50
TP276G ^F	-	4 - 3/4"	3 - 1/2", 2 - 3/4"	No	50	50	50
TP278	-	2 - 1/2", 2 - 3/4"	3 - 1/2", 2 - 3/4"	No	50	50	50
TP278G ^F	-	2 - 1/2", 2 - 3/4"	3 - 1/2", 2 - 3/4"	No	50	50	50
TP280	"C" bracket	4 - 1/2"	5 - 1/2"	No	50	50	60
TP280G ^F	"C" bracket	4 - 1/2"	5 - 1/2"	No	50	50	60
TP282	"S" bracket, set 1/2"	3 - 1/2"	5 - 1/2"	No	50	50	58
TP282G ^F	"S" bracket, set 1/2"	3 - 1/2"	5 - 1/2"	No	50	50	58
Air plenum							
TP834 ^B	For air plenum	4 - 1/2"	5 - 1/2"	No	50	50	52
Octagon extension rings – (slot & key permit mounting without removing box screws)							
TP284 ^F	-	4 - 1/2"	-	No	50	50	36
TP286 ^F	-	2 - 1/2", 2 - 3/4"	-	No	50	50	36

^B For air plenum (no mounting holes) - not UL Listed.
^F CSA certified. G indicates ground screw installed.
^G Not UL Listed.

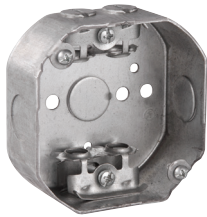
Steel octagon boxes & ceiling pans

4" OCTAGON OUTLET BOXES – 15.5 CUBIC INCH CAPACITY

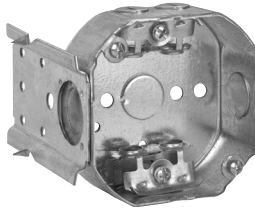
1½" DEEP

FOR ARMORED & METAL-CLAD (MCI) CABLE – CLAMPS IN EACH END

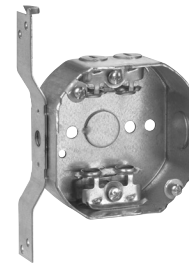
UL LISTED



TP310



TP312



TP314

Cat. #	Description	Knockouts		Fan rated (weight lbs.)	Fixture rated (weight lbs.)	Unit qty.	Wt. lbs. per 100
		Sides	Bottom				
TP310 ^A	-	4 - cable, 2 - ½"	1 - ½"	No	50	50	57
TP310G ^{A F}	-	4 - cable, 2 - ½"	1 - ½"	No	50	50	57
TP312 ^A	"C" bracket	4 - cable, 2 - ½"	1 - ½"	No	50	50	66
TP312G ^{A F}	"C" bracket	4 - cable, 2 - ½"	1 - ½"	No	50	50	66
TP314 ^A	"S" bracket, set ½"	4 - cable, 1 - ½"	1 - ½"	No	50	50	64

^AUL approved for use with aluminum interlocking grounding metal-clad cable, Type MCIA (Southwire MCAP™).

MCAP™ is a registered trademark of Southwire Company.

^FCSA certified. G indicates ground screw installed.

4" OCTAGON OUTLET BOXES – 15.5 CUBIC INCH CAPACITY

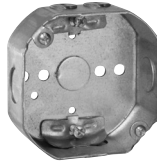
1½" DEEP

FOR NON-METALLIC CABLE – WITH CLAMPS

UL LISTED



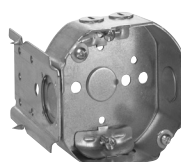
TP275



TP298



TP300



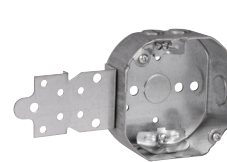
TP302



TP304



TP306



TP308

Cat. #	Description	Knockouts		Fan rated (weight lbs.)	Fixture rated (weight lbs.)	Unit qty.	Wt. lbs. per 100
		Sides	Bottom				
TP275	With mounting screws	4 - cable, 2 - ½"	1 - ½"	70	90	20	66
TP298	-	4 - cable, 2 - ½"	1 - ½"	No	50	50	56
TP300	With side nail holes	4 - cable, 2 - ½"	1 - ½"	No	50	50	55
TP300G ^F	With side nail holes	4 - cable, 2 - ½"	1 - ½"	No	50	50	55
TP302	"C" bracket	4 - cable, 2 - ½"	1 - ½"	No	50	50	65
TP302G ^F	"C" bracket	4 - cable, 2 - ½"	1 - ½"	No	50	50	65
TP304	"S" bracket, set ½"	4 - cable, 1 - ½"	1 - ½"	No	50	50	64
TP306	Two screw ears	4 - cable, 2 - ½"	1 - ½"	No	50	50	58
TP308	"F" bracket, set ½"	4 - cable, 1 - ½"	1 - ½"	No	50	50	64

^FCSA certified. G indicates ground screw installed.

Steel octagon boxes & ceiling pans

4" OCTAGON OUTLET BOXES – 21.5 CUBIC INCH CAPACITY

2 1/8" DEEP

FOR CONDUIT – NO CLAMPS

UL LISTED



TP288, TP290, TP294



TP292, TP838B



TP292RED



TP339

Cat. #	Description	Knockouts		Fan rated (weight lbs.)	Fixture rated (weight lbs.)	Unit qty.	Wt. lbs. per 100
		Sides	Bottom				
TP288	-	4 - 1/2"	3 - 1/2", 2 - 3/4"	No	50	25	64
TP288G [Ⓕ]	-	4 - 1/2"	3 - 1/2", 2 - 3/4"	No	50	25	64
TP288PF [Ⓔ]	-	4 - 1/2"	3 - 1/2", 2 - 3/4"	No	50	25	64
TP290	-	4 - 3/4"	3 - 1/2", 2 - 3/4"	No	50	25	64
TP290G [Ⓕ]	-	4 - 3/4"	3 - 1/2", 2 - 3/4"	No	50	25	64
TP290PF [Ⓔ]	-	4 - 3/4"	3 - 1/2", 2 - 3/4"	No	50	25	64
TP292	-	2 - 1/2", 2 - 3/4"	3 - 1/2", 2 - 3/4"	No	50	25	64
TP292G [Ⓕ]	-	2 - 1/2", 2 - 3/4"	3 - 1/2", 2 - 3/4"	No	50	25	64
TP292PF [Ⓔ]	-	2 - 1/2", 2 - 3/4"	3 - 1/2", 2 - 3/4"	No	50	25	64
TP292RED [Ⓖ]	-	2 - 1/2", 2 - 3/4"	3 - 1/2", 2 - 3/4"	No	50	25	64
TP294	-	4 - 1"	3 - 1/2", 2 - 3/4"	No	50	25	64
TP294G [Ⓕ]	-	4 - 1"	3 - 1/2", 2 - 3/4"	No	50	25	64
TP339	Blank bottom	4 - 1/2"	-	No		25	65
Air plenum							
TP838 [Ⓔ]	For air plenum	2 - 1/2", 2 - 3/4"	3 - 1/2", 2 - 3/4"	No	50	25	62

[Ⓑ]For air plenum (no mounting holes) - not UL Listed.

[Ⓔ]TP catalog numbers ending in PF include ground screw with pigtail lead.

[Ⓕ]CSA certified. G indicates ground screw installed.

[Ⓖ]Not UL Listed.

4" OCTAGON OUTLET BOXES – 21.5 CUBIC INCH CAPACITY

2 1/8" DEEP – WITH CABLE CLAMPS

UL LISTED



TP316



TP318



TP320



TP317



TP338

Cat. #	Description	Knockouts		Fan rated (weight lbs.)	Fixture rated (weight lbs.)	Unit qty.	Wt. lbs. per 100
		Sides	Bottom				
For non-metallic cable							
TP316	-	4 - cable, 2 - 1/2"	1 - 1/2"	No	50	25	68
TP318	"C" bracket	4 - cable, 2 - 1/2"	1 - 1/2"	No	50	25	88
TP318G [Ⓕ]	"C" bracket	4 - cable, 2 - 1/2"	1 - 1/2"	No	50	25	88
TP320	"S" bracket, set 1/2"	4 - cable, 1 - 1/2"	1 - 1/2"	No	50	25	81
For armored & metal-clad (MCI) cable – clamps in each end							
TP317 [Ⓐ]	-	4 - cable, 2 - 1/2"	1 - 1/2"	No	50	25	69
TP338 [Ⓐ]	"S" bracket, set 1/2"	4 - cable, 1 - 1/2"	1 - 1/2"	No	50	25	82
TP338PF [Ⓔ]	"S" bracket, set 1/2"	4 - cable, 1 - 1/2"	1 - 1/2"	No	50	25	82

[Ⓐ]UL approved for use with aluminum interlocking grounding metal-clad cable, Type MCIA (Southwire MCAP™).

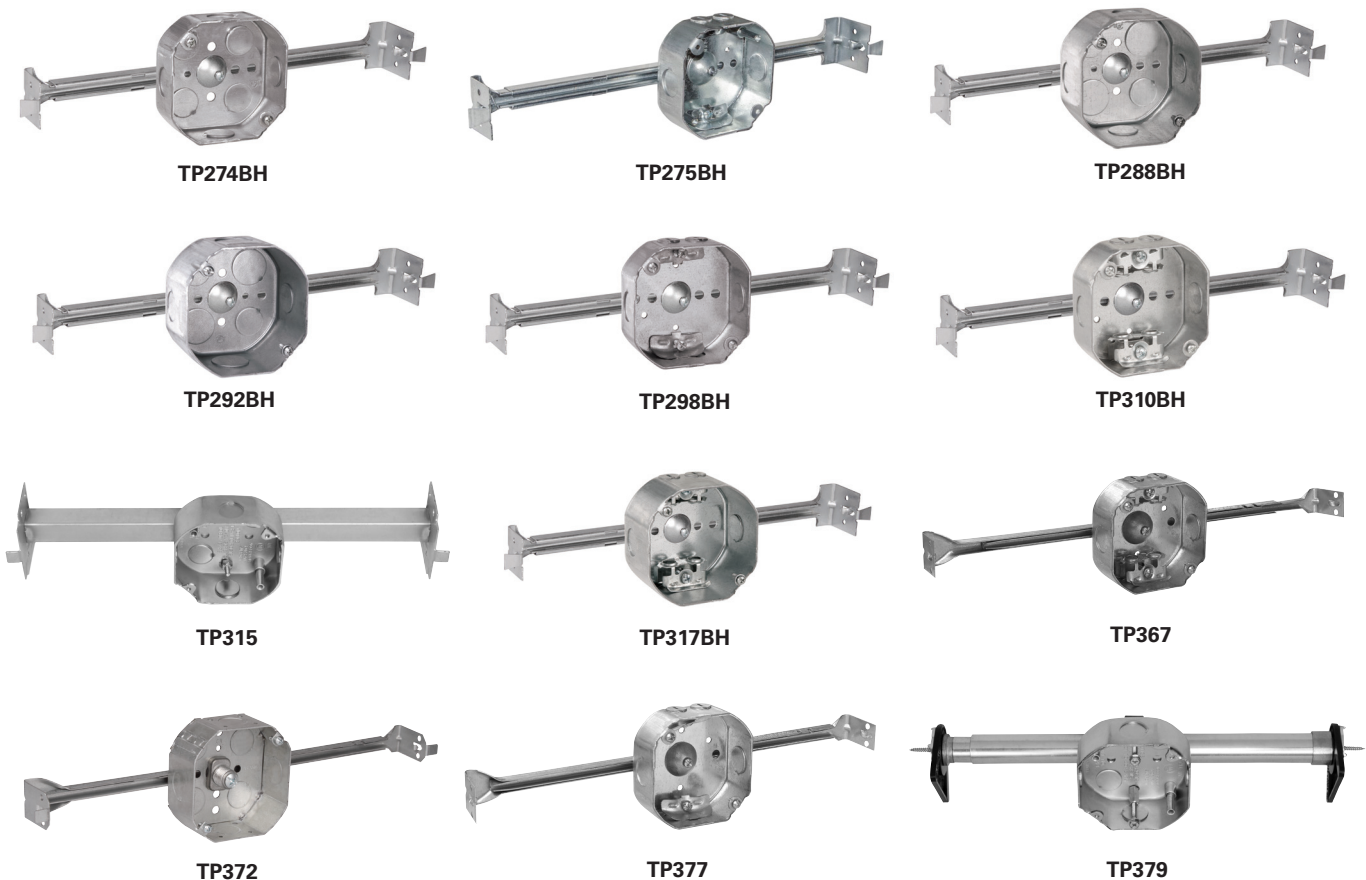
MCAP™ is a registered trademark of Southwire Company.

[Ⓔ]TP catalog numbers ending in PF include ground screw with pigtail lead.

[Ⓕ]CSA certified. G indicates ground screw installed.

Steel octagon covers & accessories

4" OCTAGON BOXES & ADJUSTABLE BAR SETS – CUBIC CAPACITY (SEE BELOW) UL LISTED



Steel boxes

Cat. #	Stud spacing	Ground pigtail	Depth	Cubic inches	Knockouts		Fan rated (weight lbs.)	16" Fixture rated (weight lbs.)	24"Fixture rated (weight lbs.)	Unit qty.	Wt. lbs. per 100
					Sides	Bottom					
For conduit – no clamps – new work											
TP372Ⓢ	16"	No	1½"	15.5	4 - ½"	4 - ½"	No	50	-	25	85
TP274BH	16" - 24"	No	1½"	15.5	4 - ½"	4 - ½"	No	50	50	10	70
TP315Ⓢ	16" - 24"	No	1½"	15.5	2 - ½"	2 - ½"	35	150	90	12	192
TP288BH	16" - 24"	No	2⅞"	21.5	4 - ½"	2 - ½", 2 - ¾"	No	50	50	10	70
TP292BH	16" - 24"	No	2⅞"	21.5	2 - ½", 2 - ¾"	2 - ½", 2 - ¾"	No	50	50	10	70
For conduit – no clamps – old work											
TP379	16" - 24"	No	1½"	15.5	4 - ½"	2 - ½"	35	150	50	12	207
For non-metallic cable – with clamps – new work											
TP377	16"	No	1½"	15.5	4 - cable, 2 - ½"	-	No	50	-	25	102
TP275BH	16" - 24"	No	1½"	15.5	4 - cable, 2 - ½"	-	70	90	50	10	201
TP298BH	16" - 24"	No	1½"	21.5	4 - cable, 2 - ½"	-	No	50	50	10	70
For armored & metal-clad (MCI) cable – clamps in each end – new work											
TP367	16"	No	1½"	15.5	4 - cable, 2 - ½"	-	No	50	-	25	100
TP367PF	16"	Yes	1½"	15.5	4 - cable, 2 - ½"	-	No	50	-	25	100
TP310BH	16" - 24"	No	1½"	15.5	4 - cable, 2 - ½"	-	No	50	50	10	70
TP317BH	16" - 24"	No	2⅞"	21.5	4 - cable, 2 - ½"	-	No	50	50	10	70

^N 4" octagon box and adjustable bar sets have ½" KOs for conduit.

^P TP315 comes with Romex clamp installed on one side. The other three sides have a ½" KO, a bagged MC clamp and screw, and a bagged plastic NM connector.

Steel octagon covers & accessories

ADJUSTABLE BAR HANGERS

UL LISTED

Features:

- Holding prong holds box in place for nailing
- Design resists bending and twisting
- Locking tabs to hold bar in position



TP356

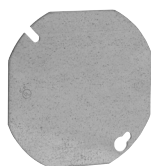


TP352

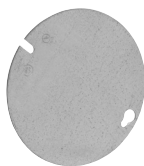
Cat. #	Stud spacing	Fan rated	16" fan weight (lbs.)	24" fan weight (lbs.)	Fixture rated	16" fixture weight (lbs.)	24" fixture weight (lbs.)	Unit qty.	Wt. lbs. per 100
TP356	16"	No	-	-	Yes	50	-	50	41.0
TP352	16" - 24"	Yes	70	70	Yes	90	50	50	72.0

4" OCTAGON BOX COVERS – CUBIC CAPACITY (SEE BELOW)

UL LISTED



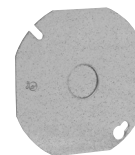
TP322, TP853^B



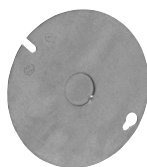
TP323



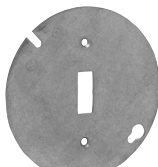
TP326, TP331,
TP332, TP333



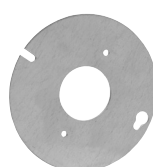
TP328



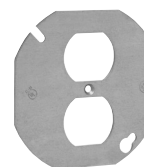
TP329



TP335



TP334



TP336

Cat. #	Description	Capacity cu. in.	Unit qty.	Wt. lbs. per 100
TP322 ^H	Flat blank, octagon shape	-	50	22
TP322RED ^H	Flat blank, octagon shape	-	50	22
TP323 ^H	Flat blank, round shape	-	50	24
TP333 ^C	Raised 1", open with ears 2 ³ / ₄ "	7.8	25	25
TP332 ^C	Raised 1/2", open with ears 2 ³ / ₄ "	3.0	25	20
TP326	Raised 5/8", open with ears 2 ³ / ₄ "	3.8	50	20
TP331 ^C	Raised 3/4", open with ears 2 ³ / ₄ "	5.8	25	25
TP328 ^H	Flat with 1/2" KO, octagon shape	-	50	22
TP329 ^H	Flat with 1/2" KO, round shape	-	50	24
TP335	Flat, for toggle switch	-	50	23
TP334 ^D	Flat, single receptacle 1 ¹³ / ₃₂ "	-	50	21
TP336	Flat, for duplex receptacle	-	50	18

Air plenum

TP853 ^B ^D	Flat, blank with PVC gasket	-	50	24
---------------------------------	-----------------------------	---	----	----

^BFor air plenum (no mounting holes) - not UL Listed.

^CcUL Listed.

^DNot UL Listed.

^HCSA certified.

Steel octagon covers & accessories

FLEXIBLE FIXTURE HANGERS

TPRFH flexible fixture hangers are used in commercial or light industrial applications where hid high bay and low bay lighting fixtures are used. Specific applications include storage facilities, shipping warehouses, retail and DIY facilities.

Features:

- Suitable for use with 1/2" or 3/4" fixture conduit stems, these hangers allow the conduit stem of the fixture (luminaire) to swing in any direction; maximum swing angle is 26° from vertical max. slope angles 22 1/2°
- Available for attachment to round or octagonal steel boxes
- Quickly and easily attached by two screws
- Hangers are drilled and tapped for use with 3/4" conduit stem as standard and come supplied with a 3/4" - 1/2" reducer for 1/2" conduit stem applications

Certifications and compliances:

- UL1598
- CSA C22.2 No. 250
- Suitable for damp locations



Standard materials and finishes:

- Material – sheet steel
- Finish – zinc chromate for corrosion resistance

Cat. #	Description	Support wt. (lbs.)	Fan rated (weight lbs.)	Fixture rated (weight lbs.)
TPRFH12	For use with 4" round or octagon boxes	50	No	*

*Rating is based on the rating of the outlet box on which it is mounted to.

LAMP HOLDERS

Applications:

- For use with 4" octagon boxes

Standard Material:

- Plastic molded of heat- and impact-resistant material that prevents discoloring and reduces breakage



Cat. #	Description	Unit qty.	Wt. lbs. per 100
TP16099	Lampholder, keyless, feed through	50	23

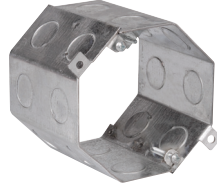
Steel specialty boxes

4" OCTAGON CONCRETE BOXES & HUNG CEILING BOXES

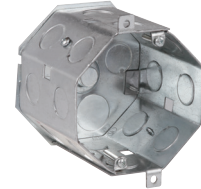
UL LISTED



TP620, TP622, TP628



TP635, TP636, TP644



TP623, TP624

Cat. #	Depth	Knockouts	Capacity cu. in.	Fan rated (weight lbs.)	Fixture rated (weight lbs.)	Unit qty.	Wt. lbs. per 100
TP620 ^M ^Q	2"	1/2" and 3/4" single row	23.0	No	50	25	60
TP622 ^M ^Q	2 1/2"	1/2" and 3/4" single row	29.0	No	50	25	72
TP628 ^M ^Q	3"	1/2" and 3/4" single row	35.0	No	50	20	85
TP634 ^G	3"	1" and 3/4" single row	30.3	No	50	20	77
TP635 ^M ^Q	3 1/2"	1/2" double row	43.0	No	50	20	93
TP636 ^M ^Q	3 1/2"	1/2" and 3/4" double row	43.0	No	50	20	93
TP639 ^G	3 1/2"	1" and 3/4" double row	41.0	No	50	20	89
TP642 ^G	4"	1" and 3/4" double row	47.0	No	50	20	106
TP644 ^M ^Q	4"	1/2" and 3/4" double row	47.0	No	50	20	113
Hung ceiling boxes (with TP650 cover)							
TP623 ^M ^Q	3 1/2"	1/2" double row	43.0	No	50	20	93
TP624 ^M ^Q	3 1/2"	1/2" and 3/4" double row	43.0	No	50	20	93

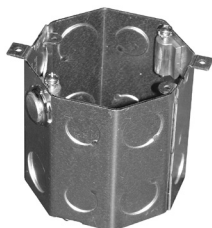
^Q Not UL Listed for stackable use.

^G Not UL Listed.

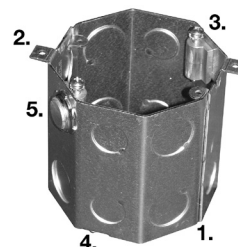
Steel specialty boxes

4" OCTAGON CONCRETE BOXES

UL LISTED



TP643



Applications:

- Used in poured deck applications
- Typical construction includes: high rises, apartments, condominiums and restaurants with outdoor dining areas
- Installed on wooden or steel forms and concrete poured around
- Upon removal of the forms, the box is flush with the concrete
- It is common, and continuing to become even more so, to have ceiling fans mounted to these boxes; because of the additional mounting support boss, this new box is suitable for use with fans of up to 70 pounds and fixtures up to 90 pounds

Features:

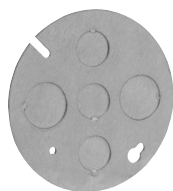
1. The TP643 fan rated concrete box is made from two-piece welded construction and is supplied with two rows of $\frac{1}{2}$ " and $\frac{3}{4}$ " dedicated KOs
2. The box is also supplied with two external mounting ears which are used to secure the box to the forms
3. The fan (or fixture) is held securely in place by the two 10-32 x $1\frac{1}{2}$ " long pan head screws and lock washers; the screws attach to the specially designed boss
4. There are two 8-32 x $\frac{1}{2}$ " screws provided for attachment of a box plate/cover (TP648, TP649 or TP650 – ordered separately)
5. Mounting support boss and locknuts allow the TP643 box to be used with fans of up to 70 pounds and fixtures up to 90 pounds

Cat. #	Depth	Knockouts	Capacity cu. in.	Fan rated (weight lbs.)	Fixture rated (weight lbs.)	Unit qty.	Wt. lbs. per 100
TP643	4"	$\frac{1}{2}$ " and $\frac{3}{4}$ "	46.0	70	90	20	102

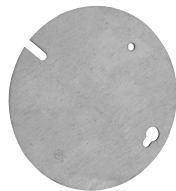
Ⓢ Not UL Listed for stackable use.

CONCRETE BOX PLATES

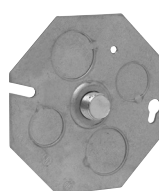
UL LISTED



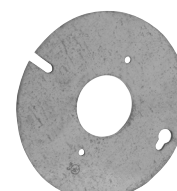
TP648



TP649



TP650



TP652

Cat. #	Description	Unit qty.	Wt. lbs. per 100
TP648	No stud, 3 - $\frac{1}{2}$ " and 2 - $\frac{3}{4}$ " KOs	50	28
TP649	Flat, blank	50	28
TP650	$\frac{3}{8}$ " stud, 2 - $\frac{1}{2}$ " and 2 - $\frac{3}{4}$ " KOs	50	33
TP652	Single receptacle	50	24

Ceiling fan boxes & supports

CEILING FAN BOXES – PVC

UL LISTED

Weight limits: fans and fixtures are supported independent of outlet box. Mounting screws go through box and into joist. Box will support up to 70 lbs. for fans and 90 lbs. for fixtures. Provided with Romex connector.



TP1300

Cat. #	Description	Capacity cu. in.	Knockouts	Integral clamp	Fan rated (weight lbs.)	Fixture rated (weight lbs.)	Unit qty.	Wt. lbs. per 100
TP1300	4 ¹ / ₁₆ " dia., 1/2" deep pan section, 4" deep overall – with mounting hardware and external clamp, protective cover	14.0	3 - 1/2"	1	70	90	24	34

NON-METALLIC CEILING FAN BOXES

2³/₁₆" DEEP

UL LISTED

With clamps for non-metallic cable.

All mounting hardware supplied; suitable for support of fans weighing up to 35 lbs.

Features:

- Made of heavy duty, engineered thermoplastic material
- Offers the labor saving feature of quick entry and integral clamping
- Eliminates the need to use a screwdriver to break open pry-outs
- The easy access entry point serves as a wire clamp, eliminating time required to mechanically secure the wire to the box



TP16511

Cat. #	Diameter	Mounting method	Capacity cu. in.	No. Of clamp openings	Fan rated (weight lbs.)	Fixture rated (weight lbs.)	Unit qty.	Wt. lbs. per 100
TP16511	4"	Nails only	20.8	6	35	50	25	21

Steel boxes

Steel box accessories

GROUNDING SCREW & PIGTAIL



TP711



TP701



TP704



TP704BULK

Cat. #	Description	Std. pkg.	Unit qty.	Wt. lbs. per 100
TP701	Grounding screw with 8" insulated no. 12 stranded wire	1000	100	2.0
TP711	Grounding screw with 8" insulated no. 12 copper wire	1000	100	2.0
TP704	#10-32 X 3/8" grounding screw	1000	1000	0.5
TP704BULK	#10-32 X 3/8" grounding screws in jar	1000	1000	0.4

LOW PROFILE MOUNTING & DRILLING & TAPPING SCREWS



TP710



STS8BULK

Cat. #	Description	Unit qty.	Wt. lbs. per 100
Low profile screws – reduces risk of sheetrock bulge			
TP710	#8 x 1/2" low profile screws	1000	0.5
STS8BULK	#8 x 1/2" self-tapping screw jar	1000	0.4

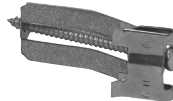
GROUNDING CLIP



TP706

Cat. #	Description	Std. pkg.	Unit qty.	Wt. lbs. per 100
TP706	For grounding switch and outlet boxes using non-metallic sheathed cables No. 14 And No. 12, With grounding wire	1000	100	0.5

OLD WORK CLIP



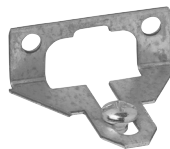
TP651

Cat. #	Description	Std. pkg.	Unit qty.	Wt. lbs. per 100
TP651	Clips lock old work steel switch boxes tightly to wall; two required per box	250 sets	25 sets	4

REPLACEMENT PARTS



TP900



TP901



TP902

Cat. #	Description	Unit qty.	Wt. lbs. per 100
TP900	MC-BX clamp with screws	200	17.3
TP901	One screw mounting ear with screws	200	3.2
TP902	Two screw mounting ear with screws	200	2.7

HOLD-IT SWITCH BOX SUPPORTS

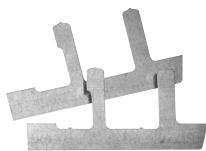


FIG. 1

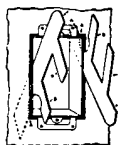


FIG. 2

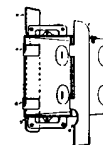


FIG. 3

Cat. #	Description	Unit qty.	Wt. lbs. per 100
TP708	Two metal holders for mounting old work switch boxes in all types of wall materials	500 sets	5

SWITCH BOX EXTENSIONS



TP709

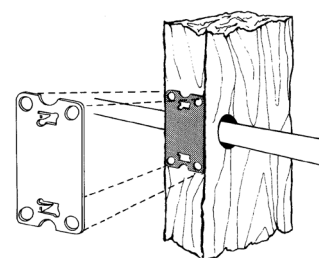
Cat. #	Description	Capacity cu. in.	Unit qty.	Wt. lbs. per 100
TP709 [Ⓞ]	Fits snugly inside all 3" x 2" width boxes; maximum adjustable depth 0.78"; furnished with mounting screws	3.5	50	13

[Ⓞ]Not UL Listed.

STEEL STUD SAFETY PLATES

Features:

- Meets requirement of National Electric Code®
- Same size as face of stud
- No nails required
- Protects electrical cable and copper water pipes



Cat. #	Description	Unit qty.	Wt. lbs. per 100
TP659	2" x 3 1/8" steel plate	100	11

"BACK TO BACK" BOX CONNECTORS – ZINC DIE CAST

Applications:

- For use as a short raceway between two boxes
- Width 1.00"; length 1.12"



Cat. #	Size	Unit qty.	Wt. lbs. per 100
5050	1/2"	25	8

PVC switch boxes

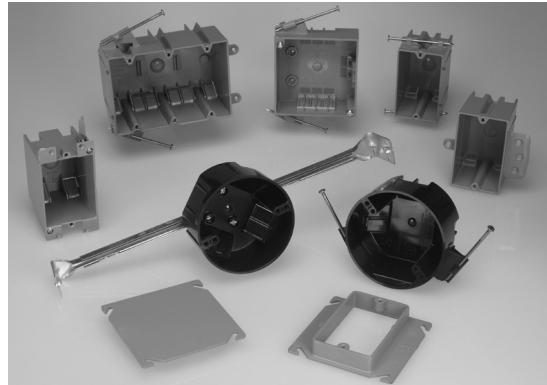
Applications:

Non-metallic switch and outlet boxes are used:

- In branch circuit wiring as a splice point
- To mount wiring devices such as switches and receptacles
- To provide mechanical protection for wiring systems and electrical devices

Features:

- Available for use with wood or metal studs to meet any construction preference
- Quick entry feature on all non-metallic boxes offers labor savings – no need to break out knockouts – simply push the non-metallic cable into the box; no tools are required; no need to remove knockouts
- Unique configuration of this quick entry feature on single gang boxes provides a self-feeding feature that eliminates the need to reach inside the box to pull the wire out
- Integral labor saving clamping feature on two, three and four gang boxes; the multiple gang box unique entry also serves as a clamp, eliminating the need to mechanically secure the cable inside the box
- There are no separate clamps or screws to install or tighten; each entry into the multiple gang boxes has the quick entry feature, allowing the installer to simply push the cable into the box without the need for tools or removal of knockouts, so the cable can be inserted where it is required



Certifications and compliances:

- UL File No. E-102328
- Classified for use in fire rated (2 HR) wall or ceiling; fire rating no. R9933

Standard materials:

- PVC (polyvinyl chloride compound)

SWITCH BOXES – ANGLED NAILS

UL LISTED



TP1800



TP2000



TP2300

Cat. #	Bracket or nails	Capacity cu. in.	H	W	D	Unit qty.	Wt. lbs. per 100
TP1800	Nails	18.0	3.70"	2.25"	2.84"	100	23
TP2000	Nails	20.3	3.70"	2.25"	3.13"	100	25
TP2300	Nails	23.0	3.70"	2.25"	3.60"	100	27

SWITCH BOXES – INTEGRAL CLAMPS

UL LISTED



TP1690
(Old work)



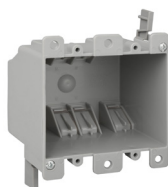
TP2030
(For wood or metal studs)

Cat. #	Bracket or nails	Capacity cu. in.	H	W	D	Unit qty.	Wt. lbs. per 100
TP1690	Swing clips and integral clamps	16.0	3 ⁷ / ₈ "	2 ⁷ / ₁₆ "	2 ³ / ₄ "	50	20
TP2030	Face bracket (1/2" offset)	20.3	3 ¹¹ / ₁₆ "	2 ¹ / ₄ "	3 ³ / ₁₆ "	100	24

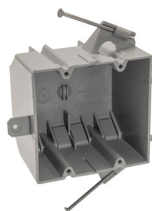
PVC switch boxes

3" DEEP SWITCH BOXES – TWO GANG

UL LISTED



TP3490
(Old work)



TP3600



TP3635

Cat. #	Bracket or nails	Capacity cu. in.	H	W	D	Unit qty.	Wt. lbs. per 100
TP3490	Swing clips	25.0	3 ⁹ / ₁₆ "	4"	3 ³ / ₁₆ "	30	29
TP3600	Nails	36.0	3 ¹ / ₄ "	4"	3"	25	37
TP3635 ^A	Brackets and nails	48.0	3 ³ / ₄ "	4"	3"	50	42

^AFace bracket on PVC boxes are offset 1/2" unless stated otherwise.

2¹¹/₁₆" DEEP SWITCH BOXES – THREE GANG

UL LISTED



TP4600



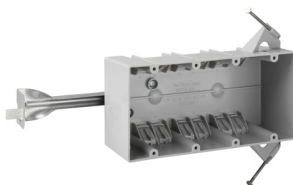
TP4635

Cat. #	Bracket or nails	Capacity cu. in.	Unit qty.	Wt. lbs. per 100
TP4600	Nails	44.0	50	45
TP4635 ^A	Brackets and nails	74.0	50	50

^AFace bracket on PVC Boxes are offset 1/2" unless stated otherwise.

2¹¹/₁₆" DEEP SWITCH BOXES – FOUR GANG

UL LISTED



TP6180

Cat. #	Bracket or nails	Capacity cu. in.	Unit qty.	Wt. lbs. per 100
TP6180 ^B	Nails and bar support	61.0	25	85

^BNot two hour fire rated.

PVC boxes

PVC switch boxes

LOW VOLTAGE PARTITION – TWO, THREE OR FOUR GANG PVC



TP1000, TP1001

Cat. #	Use with the following boxes	Unit qty.	Wt. lbs. per 100
TP1000	TP3600, TP6180	120	3
TP1001	TP3635, TP4635	120	4

4" SQUARE WITH INTEGRAL CLAMPS – 18.0 CUBIC INCH CAPACITY

1 $\frac{5}{8}$ " DEEP

UL LISTED



TP1900

Cat. #	Bracket	Capacity cu. in.	Unit qty.	Wt. lbs. per 100
TP1900	Yes	18.0	75	26

4" SQUARE PVC DEVICE COVERS

UL LISTED



TP1013



TP1023

Cat. #	Raised	Capacity cu. in.	Unit qty.	Wt. lbs. per 100
TP1013	$\frac{1}{2}$ "	3.8	100	8
TP1023	$\frac{1}{2}$ "	5.8	75	8

Ceiling boxes

3 1/2" NON-METALLIC CEILING BOXES – PVC

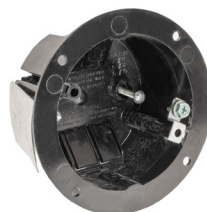
2 7/8" DEEP

UL LISTED

Weight limit: 50 lbs. for fixture except where indicated.



TP16200,
(TP16201 – 2 1/8" deep)
old work



TP16201



TP16311

Cat. #	Clamps	Ground plate	Bracket/ bar hanger	Capacity cu. in.	No. of clamp openings	Fan rated (weight lbs.)	Fixture rated (weight lbs.)	Unit qty.	Wt. lbs. per 100
TP16200 ^B	Yes	-	Snap	15.0	4	No	14 (fixture) 6 (wall)	50	27
TP16201 ^B	Yes	Yes	Snap	15.0	4	No	14 (fixture) 6 (wall)	50	29
TP16311 ^A	Yes	Yes	Nails	18.0	4	No	50	75	20

^A Nail bracket is set 1 5/16" back from the face of the box.

4" NON-METALLIC CEILING BOXES – PVC

2 1/4" DEEP

UL LISTED

Weight limit: 50 lbs. for fixture except where indicated.



TP16111, TP16110



TP16122, TP16123

Cat. #	Clamps	Ground plate	Bracket/ bar hanger	Capacity cu. in.	No. of clamp openings	Fan rated (weight lbs.)	Fixture rated (weight lbs.)	Unit qty.	Wt. lbs. per 100
TP16111	Yes	-	Nails	20.3	4	No	50	75	19
TP16110	Yes	Yes	Nails	20.0	4	No	50	75	21
TP16122	Yes	-	14" - 16"	20.8	4	No	50	20	59
TP16123	Yes	Yes	14" - 16"	20.8	4	No	50	20	61

NON-METALLIC CEILING FAN BOXES

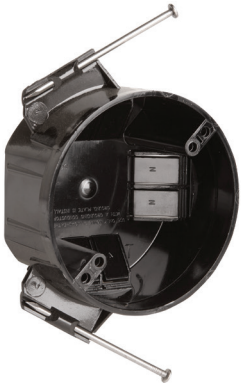
2³/₁₆" DEEP

UL LISTED

With clamps for non-metallic cable.
All mounting hardware supplied; suitable for support of fans weighing up to 35 lbs.

Features:

- Made of heavy duty, engineered thermoplastic material
- Offers the labor saving feature of quick entry and integral clamping
- Eliminates the need to use a screwdriver to break open pry-outs
- The easy access entry point serves as a wire clamp, eliminating time required to mechanically secure the wire to the box



TP16511

Cat. #	Diameter	Mounting method	Capacity cu. in.	No. Of clamp openings	Fan rated (weight lbs.)	Fixture rated (weight lbs.)	Unit qty.	Wt. lbs. per 100
TP16511	4"	Nails only	20.8	6	35	50	25	21

CEILING FAN BOXES – PVC

UL LISTED

Weight limits: fans and fixtures are supported independent of outlet box. Mounting screws go through box and into joist.

Box will support up to 70 lbs. for fans and 90 lbs. for fixtures. Provided with Romex connector.



Cat. #	Description	Capacity cu. in.	Knockouts	Integral clamp	Fan rated (weight lbs.)	Fixture rated (weight lbs.)	Unit qty.	Wt. lbs. per 100
TP1300	4 $\frac{1}{16}$ " dia., $\frac{1}{2}$ " deep pan section, 4" deep overall – with mounting hardware and external clamp, protective cover	14.0	3 - $\frac{1}{2}$ "	1	70	90	24	34